

WAAS CH <b>48830</b> <b>W31A</b>	APP CRS <b>313°</b>	Rwy Ldg <b>4994</b> TDZE <b>579</b> Apt Elev <b>588</b>
--	------------------------	---

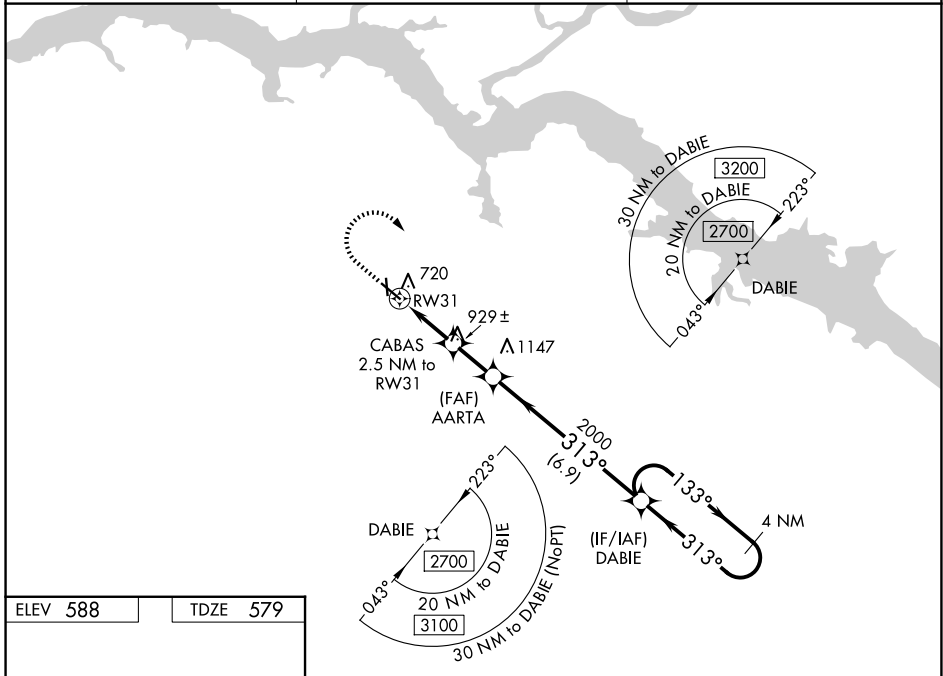
# RNAV (GPS) RWY 31

COURTLAND (9A.4)

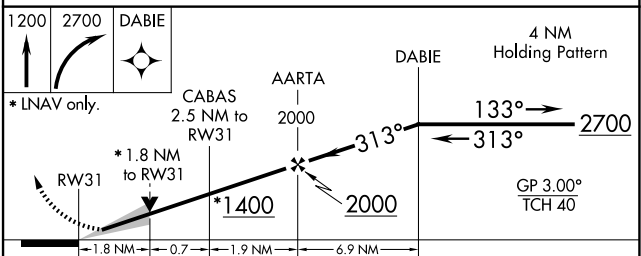
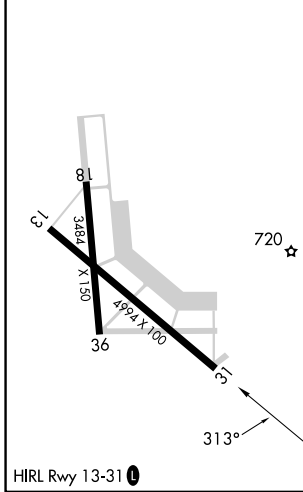
**▼** For uncompensated Baro-VNAV systems, LNAV/VNAV NA below -16°C (4°F) or above 40°C (104°F). DME/DME RNP-0.3 NA. When local altimeter setting not received, use Muscle Shoals altimeter setting and increase all DAs 38 feet and all MDAs 40 feet, increase LNAV/VNAV all Cats and LNAV Cats C/D visibility 1/8 SM and Circling Cat D 1/4 SM. VDP and Baro-VNAV NA with Muscle Shoals altimeter setting. Night landing: Rwy 18 NA.

**▲** MISSED APPROACH: Climb to 1200 then climbing right turn to 2700 direct DABIE and hold.

AWOS-3P <b>118.525</b>	HUNTSVILLE APP CON ★ <b>118.05 239.0</b>	UNICOM <b>122.7 (CTAF) 0</b>
---------------------------	---	---------------------------------



ELEV <b>588</b>	TDZE <b>579</b>
-----------------	-----------------



CATEGORY	A	B	C	D
LPV DA		779-3/4	200 (200-3/4)	
LNAV/VNAV DA		938-1 1/4	359 (400-1 1/4)	
LNAV MDA	1180-1	601 (600-1)	1180-1 3/4	601 (600-1 1/4)
CIRCLING	1180-1 592 (600-1)	1240-1 652 (700-1)	1260-2 672 (700-2)	1360-2 1/2 772 (800-2 1/2)

SE-4, 14 MAY 2026 to 11 JUN 2026

SE-4, 14 MAY 2026 to 11 JUN 2026