

WAAS CH <b>42741</b> W <b>11A</b>	APP CRS <b>111°</b>	Rwy Ldg <b>4982</b> TDZE <b>128</b> Apt Elev <b>128</b>
---	------------------------	---

# RNAV (GPS) RWY 11

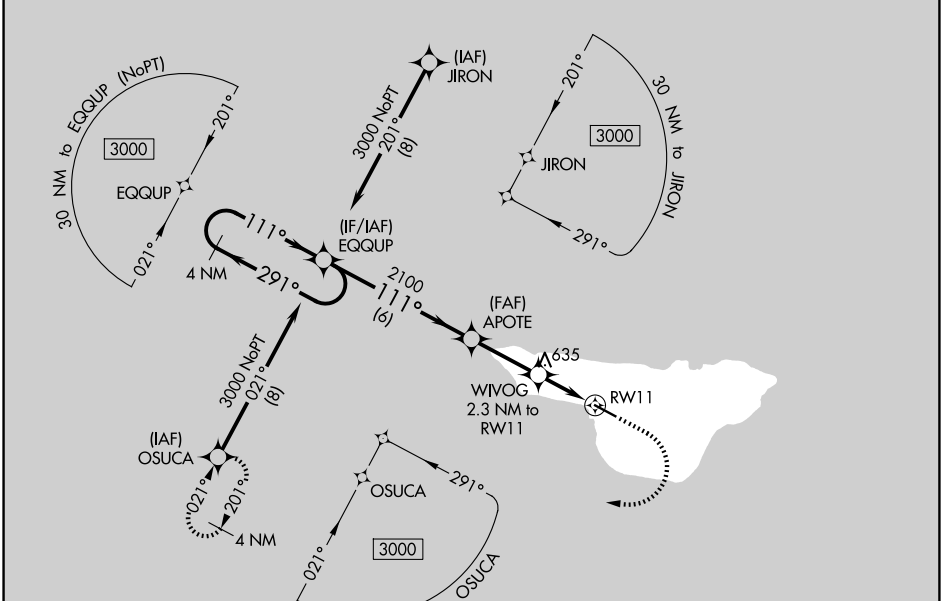
ST GEORGE (PBV) (PAPB)

**⚠** For uncompensated Baro-VNAV systems, LNAV/VNAV NA below -14°C (7°F) or above 47°C (117°F). DME/DME RNP-0.3 NA. Circling NA north of Rwy 11-29. Inop table does not apply to LPV all Cats and LNAV Cat A. For inop ALS, increase LNAV/VNAV all Cats visibility to 2½ SM. For inop ALS, increase LNAV Cat C visibility to 2½ SM.

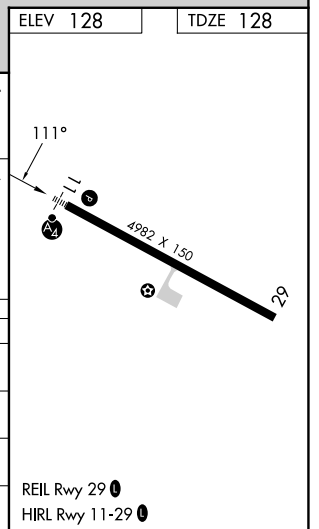


**MISSED APPROACH:** Climb to 600 then climbing right turn to 3000 direct OSUCA and hold.

ASOS <b>135.45</b>	ANCHORAGE CENTER <b>119.1 339.8</b>	CTAF <b>122.8</b>
-----------------------	--	----------------------



4 NM Holding Pattern	EQQUP	APOTE	600	3000	OSUCA
3000	← 291°	2100	↑	↷	⬠
GP 3.60°	111° →	2100	WIVOG 2.3 NM to RWY11	* LNAV only.	
TCH 56		*1060	RWY11		
	6 NM	2.7 NM	2.3 NM		
CATEGORY	A	B	C	D	
LPV DA	428-1	300 (300-1)		NA	
LNAV/VNAV DA	957-2	829 (900-2)		NA	
LNAV MDA	900-1	772 (800-1)	900-2 772 (800-2)	NA	
CIRCLING	900-1 772 (800-1)	980-1¼ 852 (900-1¼)	980-2½ 852 (900-2½)	NA	



AK, 14 MAY 2026 to 09 JUL 2026

AK, 14 MAY 2026 to 09 JUL 2026