

WAAS CH <b>62825</b> <b>W23A</b>	APP CRS <b>227°</b>	Rwy Ldg <b>5498</b> TDZE <b>352</b> Apt Elev <b>368</b>
--	------------------------	---

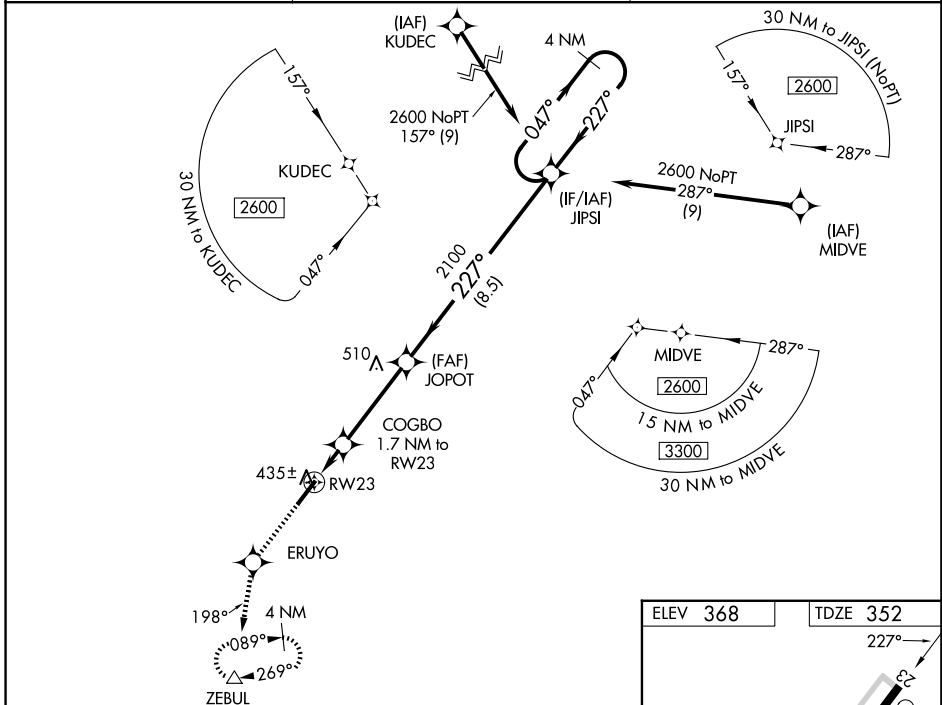
# RNAV (GPS) RWY 23

TRIANGLE NORTH EXEC (L.H.Z)

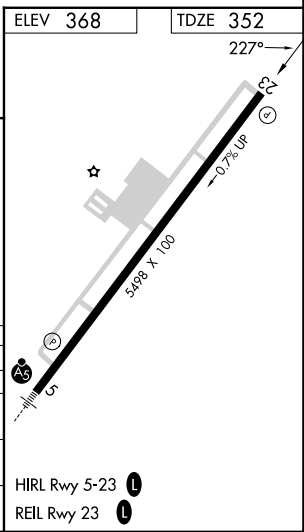
**⚠** Baro-VNAV NA when using Raleigh-Durham altimeter setting. For uncompensated Baro-VNAV systems, LNAV/VNAV NA below -15°C (5°F) or above 41°C (105°F). When VGSi inop, Straight-in/Circling Rwy 23 procedure NA at night. DME/DME RNP-0.3 NA. Helicopter visibility reduction below 1 SM NA. When local altimeter setting not received, use Raleigh-Durham altimeter setting and increase LPV DA to 667 feet; LNAV/VNAV DA to 684 feet and all visibilities ½ SM. Increase all MDAs 80 feet and visibility Cats C/D ⅓ SM.

**MISSED APPROACH:** Climb to 3300 direct ERUYO and on track 198° to ZEBUL and hold, continue climb-in-hold to 3300.

AWOS-3 <b>118.325</b>	RALEIGH APP CON <b>125.3 353.675</b>	UNICOM <b>123.0 (CTAF) 0</b>
--------------------------	---	---------------------------------



3300	ERUYO	tr 198°	ZEBUL	
* LNAV only				
	COGBO		JOBOT	JIPSI
	1.7 NM to RW23		2100	4 NM Holding Pattern
	900*		2100	2600
	1.7 NM	3.7 NM	8.5 NM	GP 3.00° TCH 46
CATEGORY	A	B	C	D
LPV DA		602-1	250 (300-1)	
LNAV/VNAV DA		619-1	267 (300-1)	
LNAV MDA		700-1	348 (400-1)	
CIRCLING	800-1 432 (500-1)	840-1 472 (500-1)	980-1¾ 612 (700-1¾)	1000-2 632 (700-2)



SE-2, 14 MAY 2026 to 11 JUN 2026

SE-2, 14 MAY 2026 to 11 JUN 2026