

VORTAC RDU 117.2 Chan 119	APP CRS 077°	Rwy Ldg TDZE Apt Elev N/A N/A 368
---	------------------------	---

VOR-A
TRIANGLE NORTH EXEC (L.H.Z)

DME required.

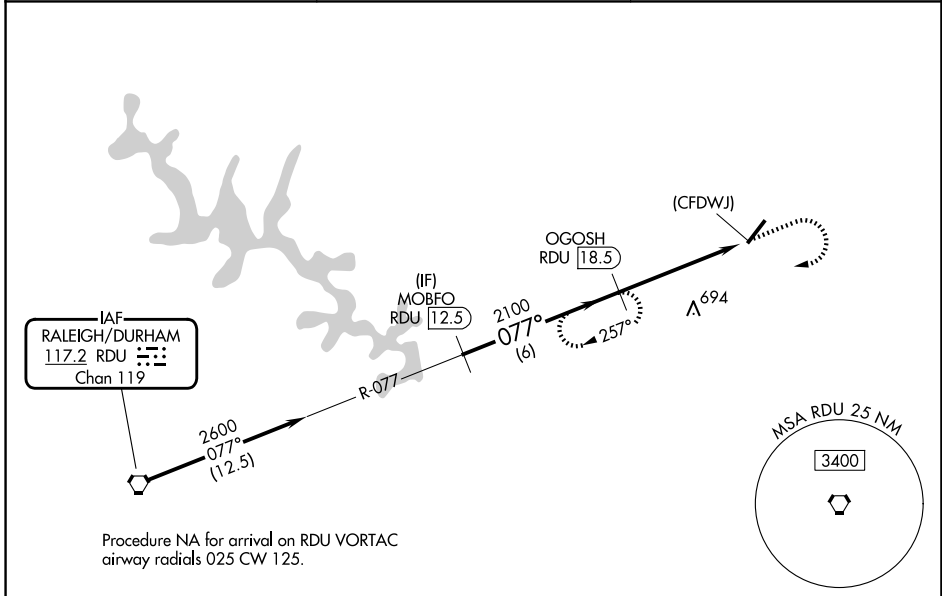
▼ When local altimeter not received, use Raleigh-Durham Intl altimeter setting and increase all MDA 80 feet and Cats B/C visibility 1/4 SM.

MISSED APPROACH: Climb to 1200 then climbing right turn to 2600 on heading 280° and on RDU VORTAC R-077 to OGOSH/RDU 18.5 DME and hold.

AWOS-3
118.325

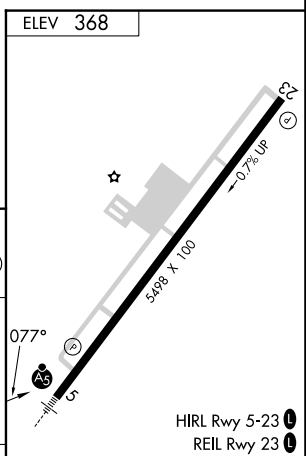
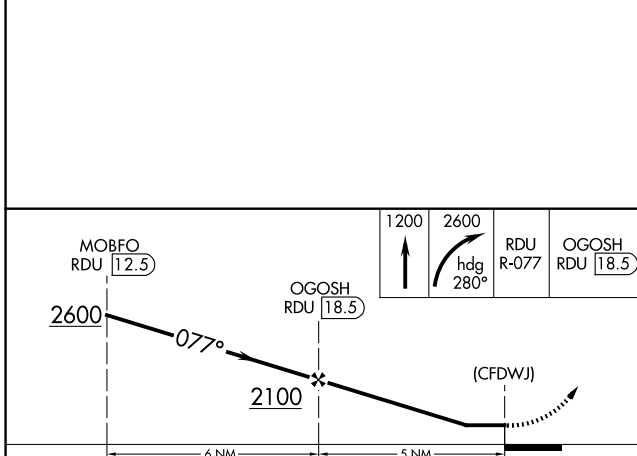
RALEIGH APP CON
125.3 353.675

UNICOM
123.0 (CTAF) 0



SE-2, 14 MAY 2026 to 11 JUN 2026

SE-2, 14 MAY 2026 to 11 JUN 2026



CATEGORY	A	B	C	D
CIRCLING	1260-1 1/4	892 (900-1 1/4)	1260-2 3/4 892 (900-2 3/4)	1260-3 892 (900-3)

FAF to MAP 5 NM					
Knots	60	90	120	150	180
Min:Sec	5:00	3:20	2:30	2:00	1:40