

VOR/DME VNY 113.1 Chan 78	APP CRS 046°	Rwy Ldg TDZE Apt Elev N/A N/A 1003
--	------------------------	---

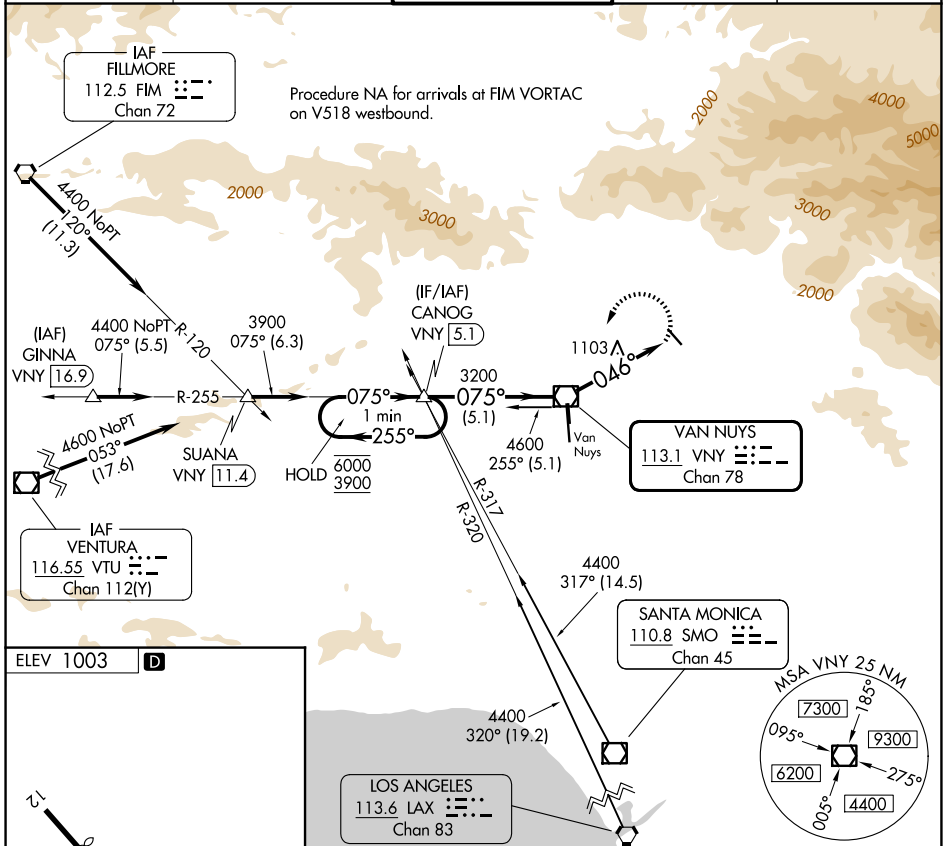
VOR-A

WHITEMAN (WHP)

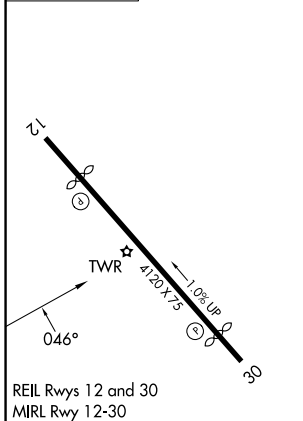
⚠ When local altimeter setting not received, use Burbank altimeter setting. Procedure NA at night.

⚠ MISSED APPROACH: Climbing left turn to 3900 direct VNY VOR/DME then on VNY VOR/DME R-255 to CANOG INT/ 5.1 DME and hold.

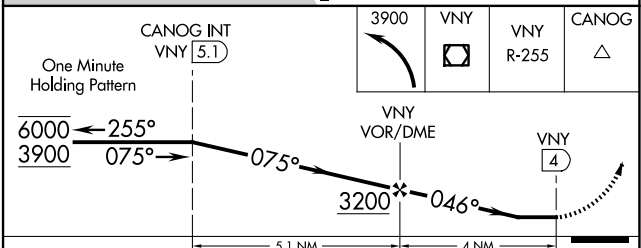
ATIS 132.1	SOCAL APP CON 120.4 360.6 (NORTH) 134.2 338.2 (WEST)	WHITEMAN TOWER * 135.0 (CTAF)	GND CON 125.0	UNICOM 122.95
----------------------	--	---	-------------------------	-------------------------



ELEV 1003 **D**



FAF to MAP 4 NM					
Knots	60	90	120	150	180
Min:Sec	4:00	2:40	2:00	1:36	1:20



CATEGORY	A	B	C	D
CIRCLING	1760-1 757 (800-1)	1860-1¼ 857 (900-1¼)	2200-3 1197 (1200-3)	NA

SW-3, 14 MAY 2026 to 11 JUN 2026

SW-3, 14 MAY 2026 to 11 JUN 2026