

APP CRS	Rwy Idg	<b>5000</b>
<b>177°</b>	TDZE	<b>105</b>
	Apt Elev	<b>107</b>

# RNAV (GPS) RWY 18

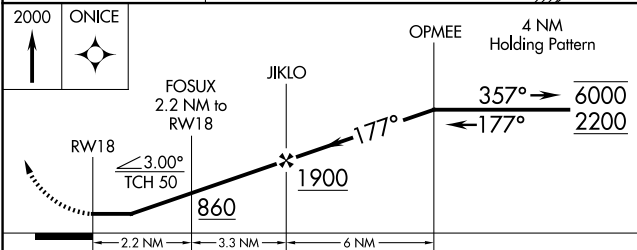
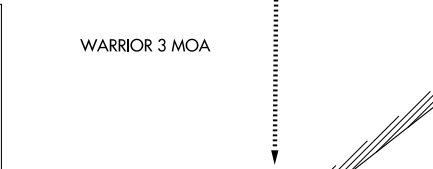
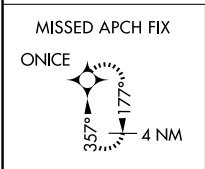
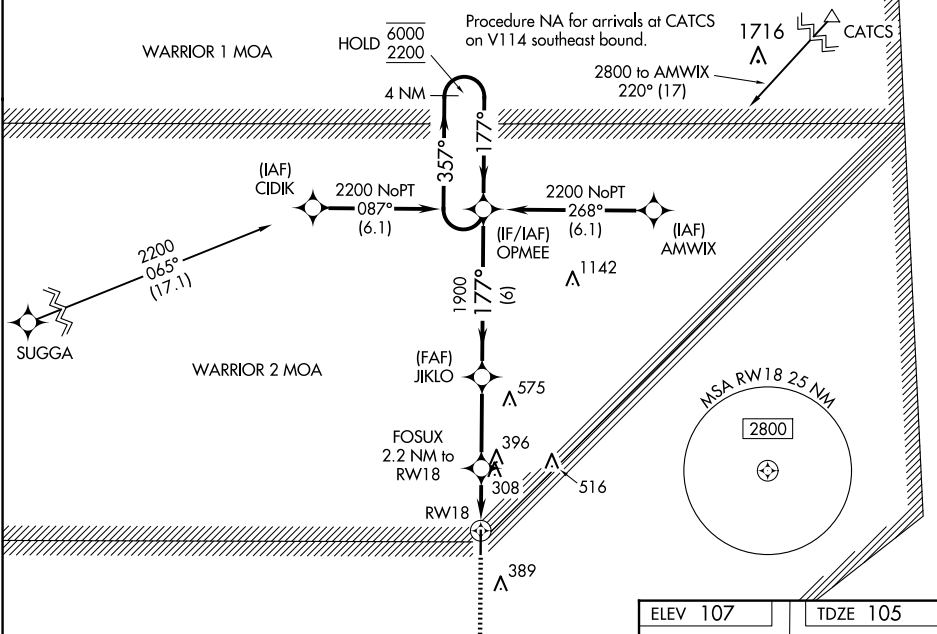
ALLEN PARISH (ACP)

RNP APCH - GPS.

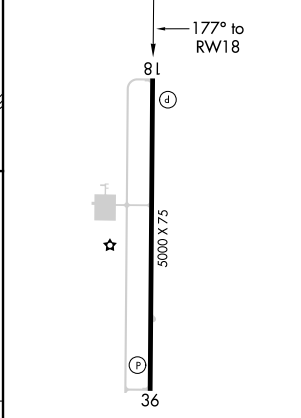
**Procedure NA at night. Rwy 18 helicopter visibility reduction below 1 SM NA. When local altimeter setting not received, use Alexandria Intl altimeter setting; increase all MDAs 100 feet and visibility LNAV Cat C ¼ SM.**

**MISSED APPROACH:** Climb to 2000 direct ONICE and hold.

AWOS-3PT <b>118.275</b>	POLK APP CON <b>123.7 261.3</b>	GCO <b>135.075</b>	UNICOM <b>122.8 (CTAF)</b>
----------------------------	------------------------------------	-----------------------	-------------------------------



ELEV 107	TDZE 105
----------	----------



CATEGORY	A	B	C	D
LNAV MDA	560-1	455 (500-1)	560-1 3/8 455 (500-1 3/8)	NA

MIRL Rwy 18-36

REIL Rwy 18 and 36

SC-4, 14 MAY 2026 to 11 JUN 2026

SC-4, 14 MAY 2026 to 11 JUN 2026