

WAAS CH <b>72714</b> <b>W24A</b>	APP CRS <b>238°</b>	Rwy ldg <b>4500</b> TDZE <b>928</b> Apt Elev <b>933</b>
--	------------------------	---

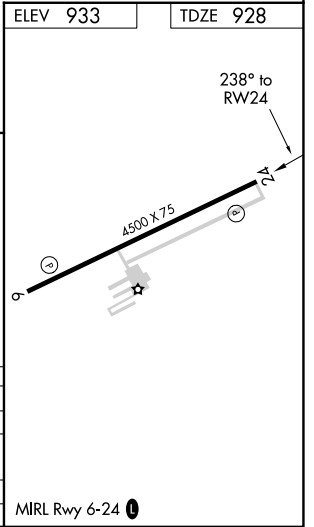
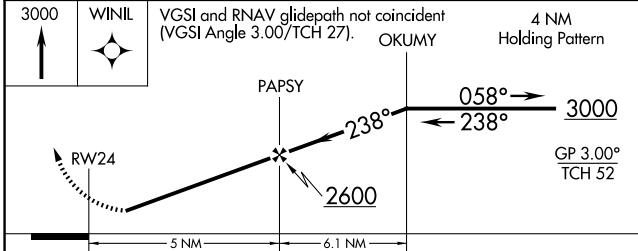
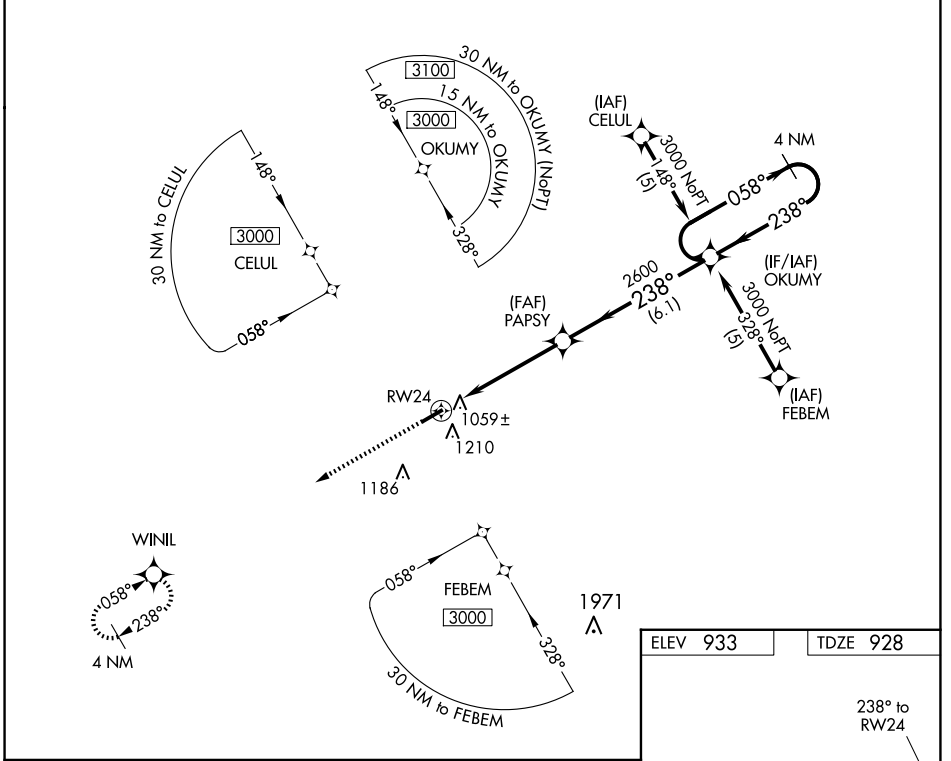
# RNAV (GPS) RWY 24

SULLIVAN RGNL (UUU)

**NA** Straight-in minimums NA at night. Circling to Rwy 24 NA at night. Baro-VNAV NA when using Rolla Nil altimeter setting. For uncompensated Baro-VNAV systems, LNAV/VNAV NA below -16°C (4°F) or above 54°C (130°F). DME/DME RNP-0.3 NA. Visibility reduction by helicopters NA. When local altimeter setting not received, use Rolla Nil altimeter setting and increase all DA 98 feet and all MDA 100 feet, increase LPV and LNAV/VNAV Cat A and B visibility ¼ mile.

**MISSED APPROACH:** Climb to 3000 direct WINIL and hold.

AWOS-3PT <b>119.375</b>	KANSAS CITY CENTER <b>128.35 284.675</b>	UNICOM <b>122.7 (CTAF) 0</b>
----------------------------	---	---------------------------------



CATEGORY	A	B	C	D
LPV DA	1178-1	250 (300-1)		NA
LNAV/VNAV DA	1392-1¾	464 (500-1¾)		NA
LNAV MDA	1460-1	532 (600-1)		NA
CIRCLING	1520-1	587 (600-1)		NA

NC-3, 14 MAY 2026 to 11 JUN 2026

NC-3, 14 MAY 2026 to 11 JUN 2026