

APP CRS	Rwy Ldg	N/A
018°	TDZE	N/A
	Apt Elev	2131

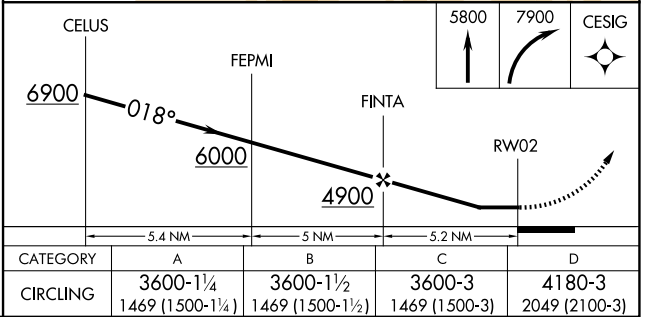
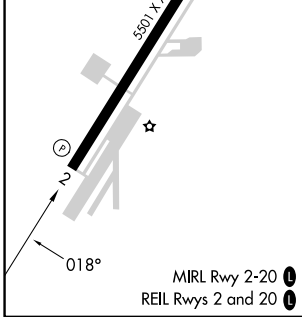
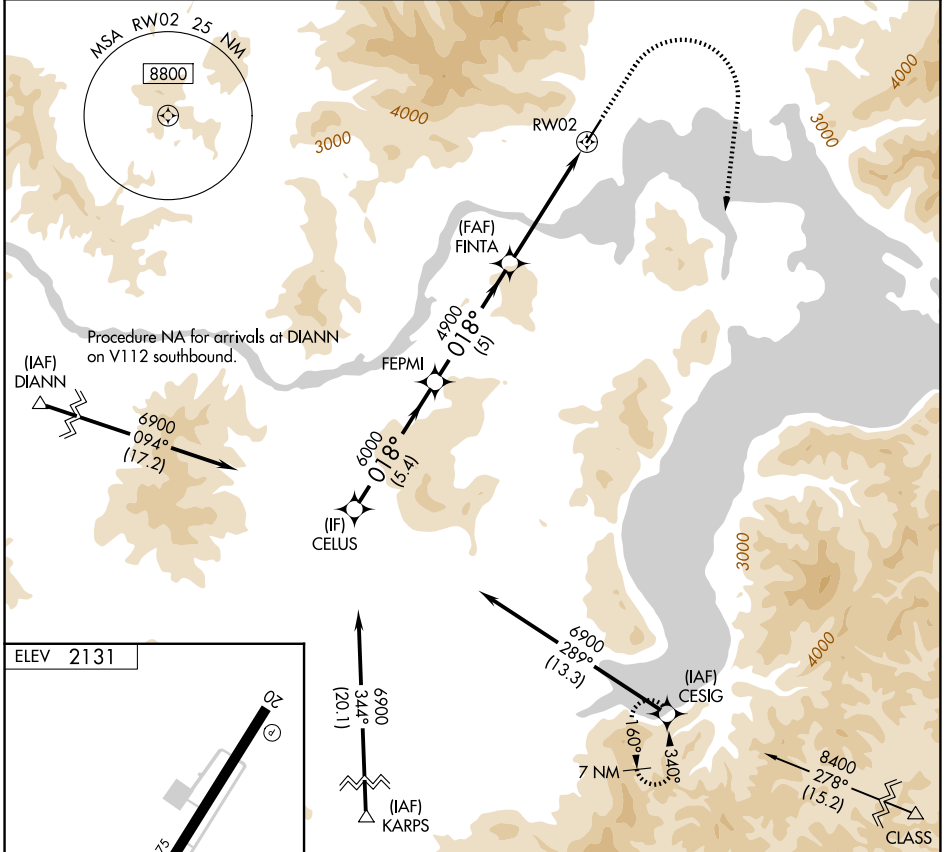
RNAV (GPS)-B

SANDPOINT (SZT)

⚠ DME/DME RNP-0.3 NA. Circling NA west of Rwy 2-20.
⚠ When local altimeter setting not received, use Deer Park altimeter setting and increase all MDA 120 feet.
❄ -16°C

MISSED APPROACH: Climb to 5800 then climbing right turn to 7900 direct CESIG and hold.

AWOS-2 135.425	SEATTLE CENTER 123.95 290.55	UNICOM 122.7 (CTAF) ①
--------------------------	--	--



NW-1, 14 MAY 2026 to 11 JUN 2026

NW-1, 14 MAY 2026 to 11 JUN 2026