

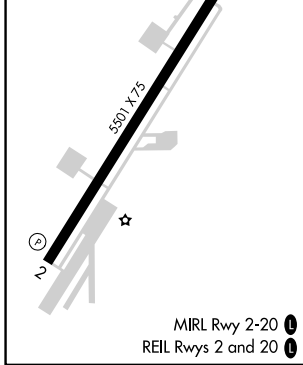
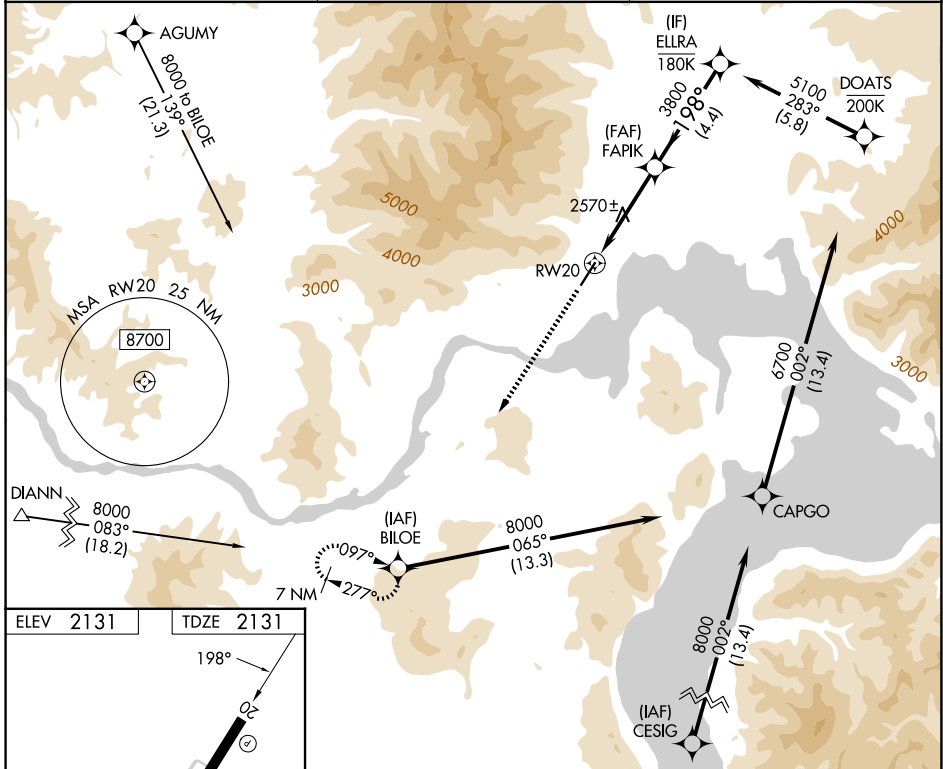
APP CRS	Rwy Ldg	5501
198°	TDZE	2131
	Apt Elev	2131

RNAV (GPS) Y RWY 20

SANDPOINT (SZT)

RNP APCH.		MISSED APPROACH: Climb to 6600 direct BILOE and hold, continue climb in hold to 6600.

AWOS-2 135.425	SEATTLE CENTER 123.95 290.55	UNICOM 122.7 (CTAF)
--------------------------	--	-------------------------------



6600 BILOE	VGS1 and descent angles not coincident (VGS1 Angle 3.75/TCH 50).			ELLRA
	3.1 NM to RWY 20 $\leq 3.77^\circ$ TCH 55			5100
	3.1 NM	0.9 NM	4.4 NM	
CATEGORY	A	B	C	D
LNAV MDA	3400-1¼ 1269 (1300-1¼)	3400-1½ 1269 (1300-1½)	3400-3 1269 (1300-3)	NA
CIRCLING	3400-1¼ 1269 (1300-1¼)	3400-1½ 1269 (1300-1½)	3400-3 1269 (1300-3)	NA

NW-1, 14 MAY 2026 to 11 JUN 2026

NW-1, 14 MAY 2026 to 11 JUN 2026