

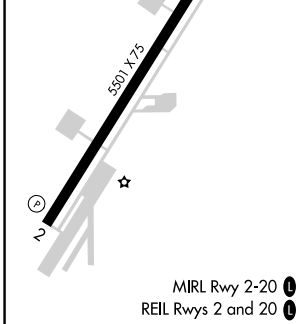
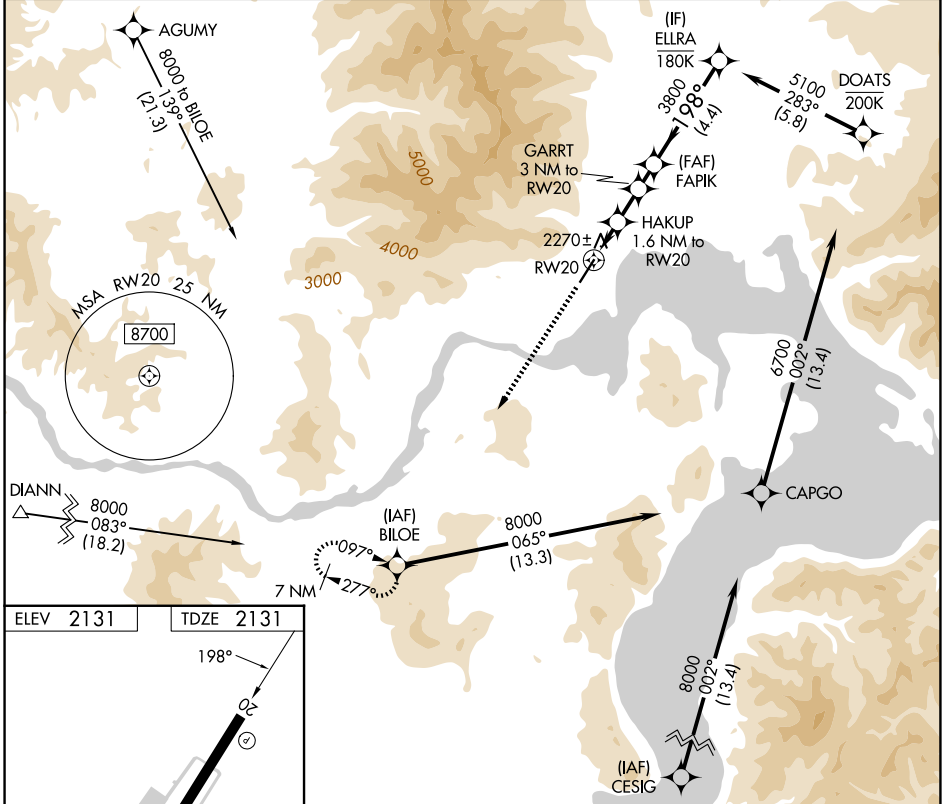
WAAS CH 99542 W20A	APP CRS 198°	Rwy Ldg TDZE Apt Elev	5501 2131 2131
--	------------------------	-----------------------------	---

RNAV (GPS) Z RWY 20

SANDPOINT (SZT)

RNP APCH.	MISSED APPROACH: Climb to 6600 direct BILOE and hold, continue climb-in-hold to 6600. *Missed approach requires minimum climb of 318 feet per NM to 4500; if unable to meet climb gradient, see RNAV (GPS) Y RWY 20.
<p>▼ Rwy 20 helicopter visibility reduction below 3/4 SM NA. When local altimeter not received, procedure NA.</p> <p>⚠ -1.6°C</p>	

AWOS-2 135.425	SEATTLE CENTER 123.95 290.55	UNICOM 122.7 (CTAF) ①
--------------------------	--	--



6600	BILOE	VGSI and descent angles not coincident (VGSI Angle 3.75/TCH 50).		ELLRA
		HAKUP 1.6 NM to RW20	GARRT 3 NM to RW20	FAPIK
		0.9 NM to RW20	3.77° TCH 55	5100
		2820	3380	3800
		0.9 NM	0.7 NM	1.4 NM
			1 NM	4.4 NM
CATEGORY	A	B	C	D
LP MDA*	2520-1	389 (400-1)	2520-1 1/8 389 (400-1 1/8)	NA

NW-1, 14 MAY 2026 to 11 JUN 2026

NW-1, 14 MAY 2026 to 11 JUN 2026