

APP CRS	Rwy Ldg	<b>4000</b>
<b>173°</b>	TDZE	<b>915</b>
	Apt Elev	<b>915</b>

# RNAV (GPS) RWY 17

LAWRENCE SMITH MEML (L.R.Y)

RNP APCH.

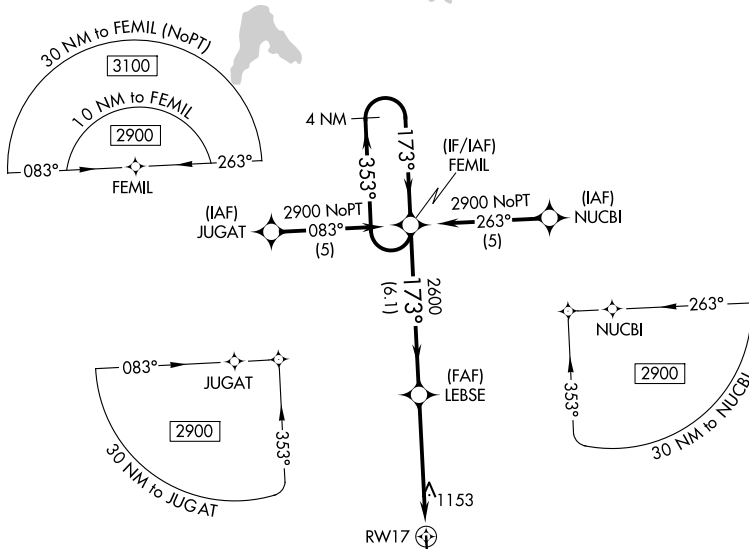
When local altimeter setting not received, use Kansas City Downtown/Wheeler Fld altimeter setting: increase all MDAs 100 feet and visibility Cat C ¼ mile. Procedure NA at night. Rwy 17 helicopter visibility reduction below 1 SM NA.

MISSED APPROACH: Climb to 2600 direct HOWIF and hold.

AWOS-3PT  
**119.975**

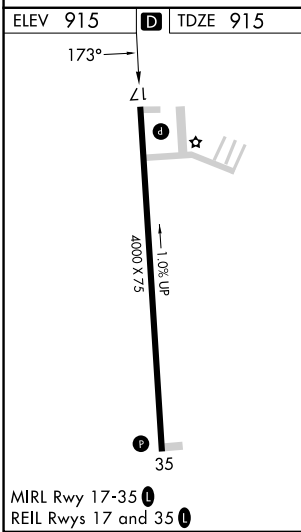
KANSAS CITY CENTER  
**125.55 327.0**

UNICOM  
**122.9 (CTAF) 0**



NC-3, 14 MAY 2026 to 11 JUN 2026

NC-3, 14 MAY 2026 to 11 JUN 2026



MISSED APCH FIX		HOWIF	
HOWIF		2600	HOWIF
4 NM Holding Pattern		VGSI and descent angles not coincident (VGSI Angle 4.00/TCH 53).	
2900 ← 353°		173° →	
LEBSE		3.04° TCH 40	
RWY 17		2600	
6.1 NM		5.1 NM	
CATEGORY	A	B	C
LNAV MDA	1420-1	505 (600-1)	1420-1½ 505 (600-1½)
CIRCLING	1420-1 505 (600-1)	1460-1 545 (600-1)	1520-1¾ 605 (700-1¾)
			D
			NA
			NA