

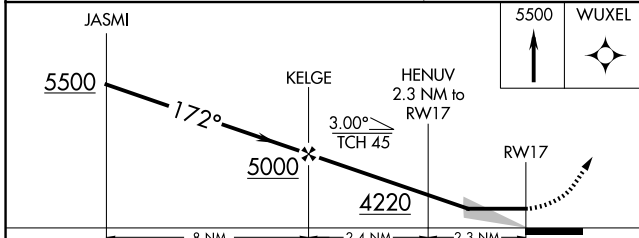
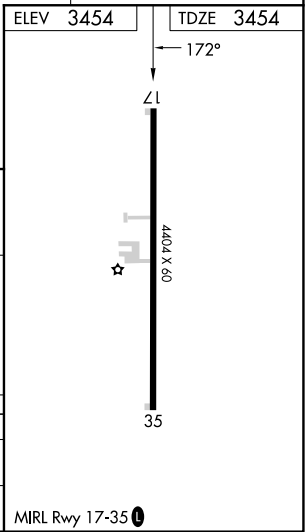
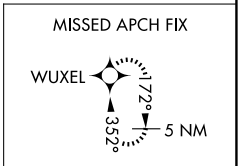
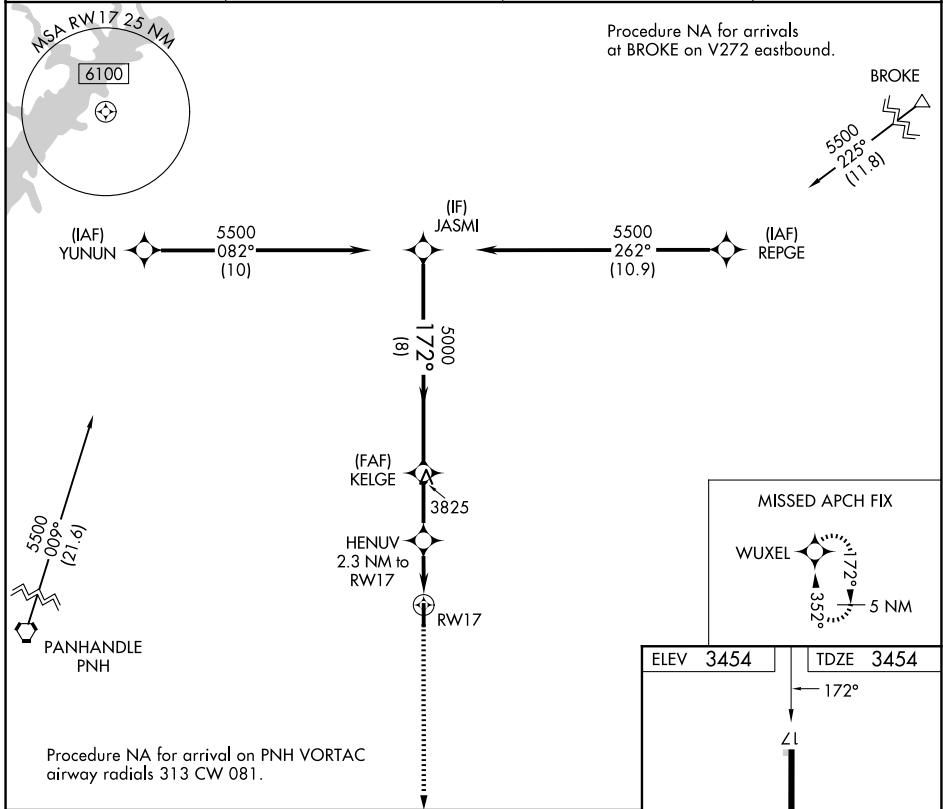
APP CRS	Rwy Ldg	<b>4404</b>
<b>172°</b>	TDZE	<b>3454</b>
	Apt Elev	<b>3454</b>

# RNAV (GPS) RWY 17

PANHANDLE-CARSON COUNTY (T45)

RNP APCH - GPS.	MISSED APPROACH: Climb to 5500 direct WUXEL and hold.
<p><b>▼</b> Use Rick Husband Amarillo Intl altimeter setting; when not received, use Borger altimeter setting and increase all MDA 40 feet.</p> <p><b>▲ NA</b></p>	

AMA ASOS <b>118.85 350.3</b>	AMARILLO APP CON * <b>119.5 307.0</b>	UNICOM <b>122.7 (CTAF)</b>	<b>123.5 0</b>
---------------------------------	--	-------------------------------	----------------



CATEGORY	A	B	C	D
RNAV MDA	3900-1	446 (500-1)	3900-1 $\frac{3}{8}$ 446 (500-1 $\frac{3}{8}$ )	NA
CIRCLING	4140-1	686 (700-1)	4140-2 686 (700-2)	NA

SC-2, 14 MAY 2026 to 11 JUN 2026

SC-2, 14 MAY 2026 to 11 JUN 2026

MIRL Rwy 17-35 0