

APP CRS 352°	Rwy Ldg TDZE Apt Elev	4404 3454 3454
------------------------	-----------------------------	---

RNAV (GPS) RWY 35

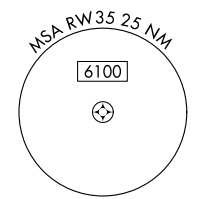
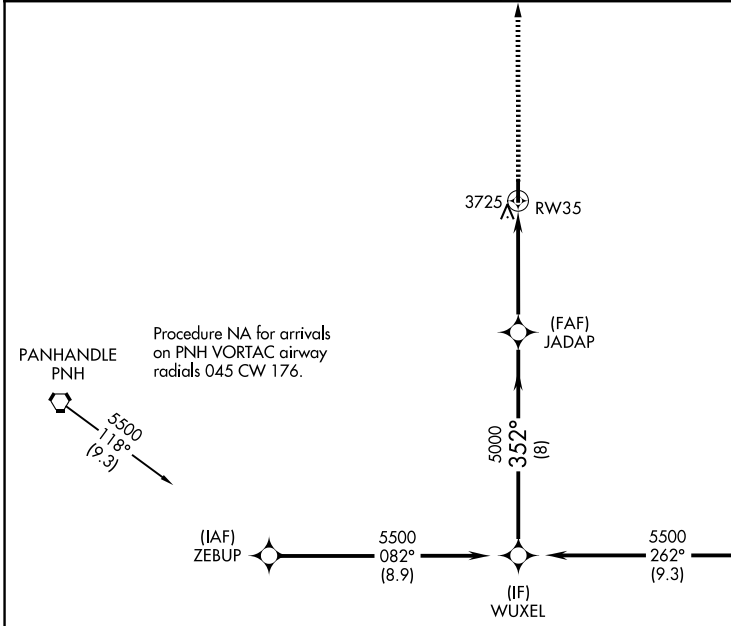
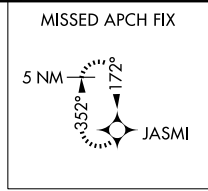
PANHANDLE-CARSON COUNTY (T45)

RNP APCH - GPS.

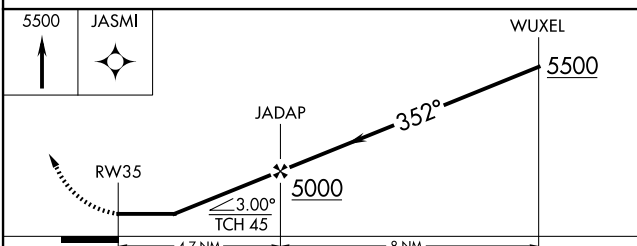
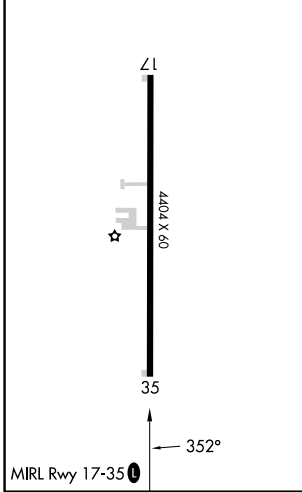
⚠ Use Rick Husband Amarillo Intl altimeter setting; when not received, use Hutchinson County altimeter setting and increase all MDA 40 feet; increase LNAV Cat C visibility to 2. Rwy 35 helicopter visibility reduction below ¾ SM NA.

MISSED APPROACH: Climb to 5500 direct JASMI and hold.

AMA ASOS 118.85 350.3	AMARILLO APP CON * 119.5 307.0	UNICOM 122.7 (CTAF)	123.5
---------------------------------	--	-------------------------------	--------------



ELEV 3454	TDZE 3454
-----------	-----------



CATEGORY	A	B	C	D
LNAV MDA	4100-1	646 (700-1)	4100-1 7/8 646 (700-1 7/8)	NA
CIRCLING	4140-1	686 (700-1)	4140-2 686 (700-2)	NA

SC-2, 14 MAY 2026 to 11 JUN 2026

SC-2, 14 MAY 2026 to 11 JUN 2026