

WAAS CH <b>63142</b> <b>W16A</b>	APP CRS <b>161°</b>	Rwy Ldg TDZE Apt Elev	<b>6400</b> <b>9934</b> <b>9934</b>
--	------------------------	-----------------------------	---

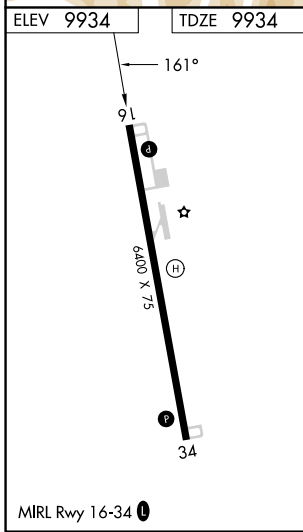
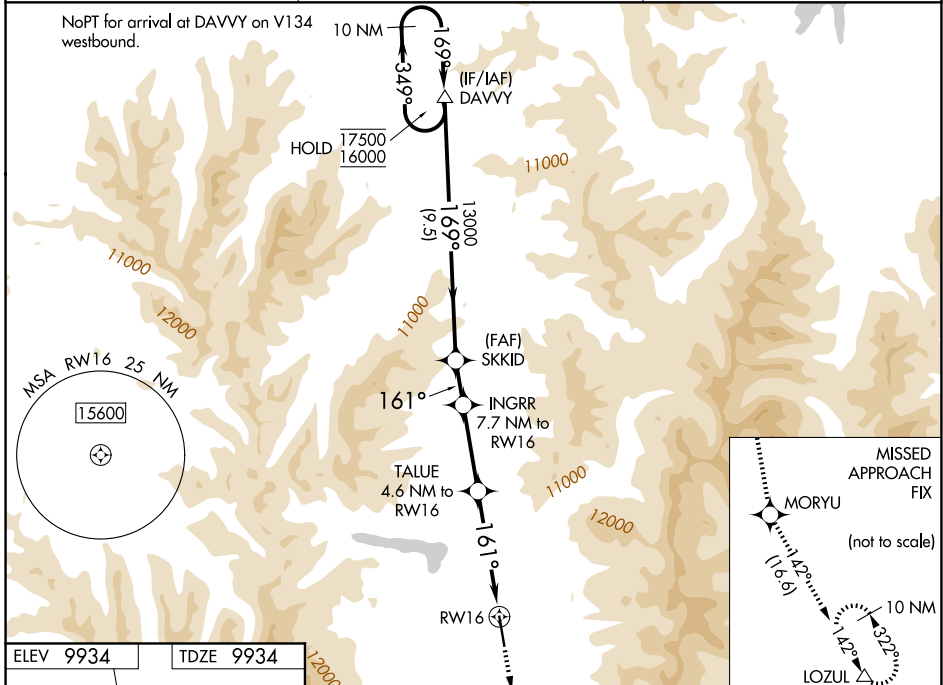
# RNAV (GPS) RWY 16

LAKE COUNTY (L.XV)

RNP APCH-GPS.  
 ▼ Baro-VNAV NA.  
 ▲ When local altimeter setting not received, procedure NA.

MISSED APPROACH: Climb to 16000 direct MORYU and on track 142° to LOZUL and hold, continue climb-in-hold to 16000.  
 #Missed approach requires minimum climb of 240 feet per NM to 12500.

ASOS <b>118.375</b>	DENVER CENTER <b>119.85 363.15</b>	UNICOM <b>122.8 (CTAF) 0</b>
------------------------	---------------------------------------	---------------------------------



VGSI and RNAV glidepath not coincident (VGSI Angle 3.00/TCH 45).

10 NM Holding Pattern	DAVVY	SKKID	INGRR	TALUE	MORYU	LOZUL
17500	16000	13000	7.7 NM to RW16	4.6 NM to RW16	16000	10 NM
GP 3.04° TCH 51	169°	169°	161°	142°	142°	322°
	9.5 NM	1.6 NM	3.1 NM	2.2 NM	2.4 NM	
CATEGORY	A	B	C	D		
LPV DA#	10184-1	250 (300-1)				NA
LPV DA	10546-1¾	612 (700-1¾)				NA
LNAV/VNAV DA	10542-1¾	608 (700-1¾)				NA
LNAV MDA	10740-1 806 (900-1)	10740-1¼ 806 (900-1¼)	10740-2½ 806 (900-2½)			NA
CIRCLING	10740-1 806 (900-1)	11040-1½ 1106 (1200-1½)	12020-3 2086 (2100-3)			NA

SW-1, 14 MAY 2026 to 11 JUN 2026

SW-1, 14 MAY 2026 to 11 JUN 2026