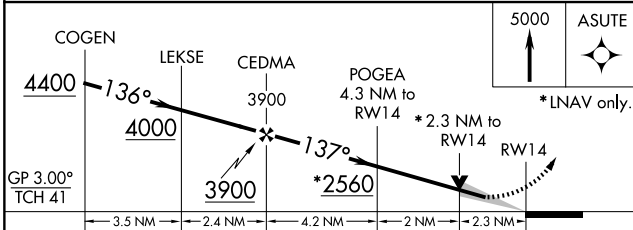
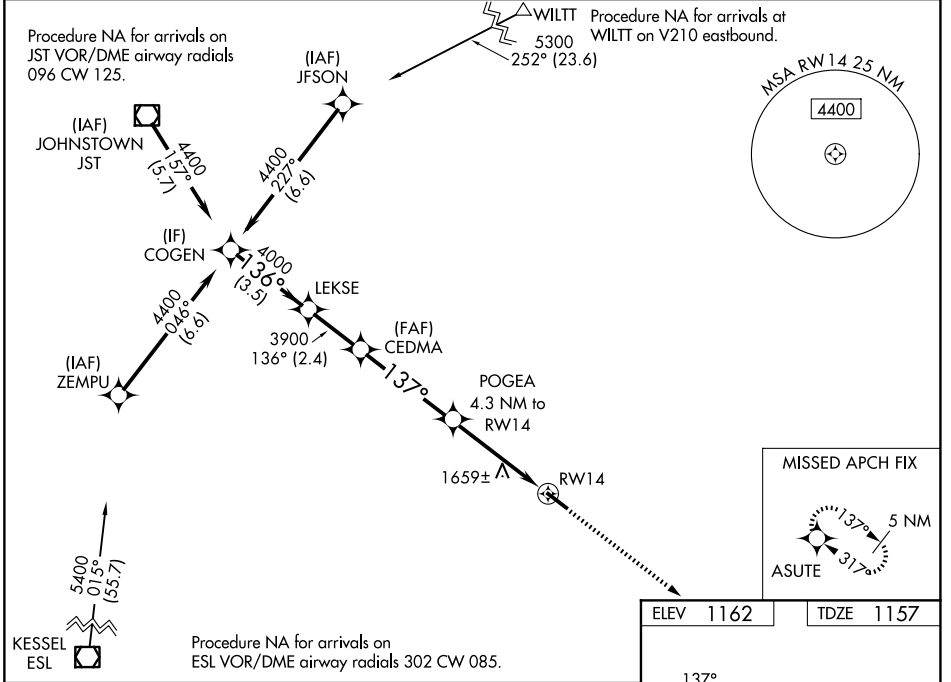


WAAS CH 72916 W14A	APP CRS 137°	Rwy Ldg TDZE Apt Elev	5006 1157 1162
--	------------------------	-----------------------------	---

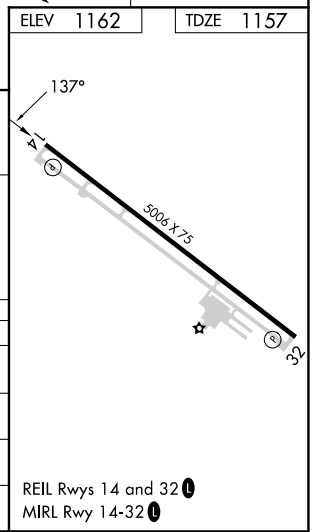
RNAV (GPS) RWY 14

BEDFORD COUNTY (HMZ)

RNP APCH.		<p>MISSED APPROACH: Climb to 5000 direct ASUTE and hold, continue climb-in-hold to 5000.</p>
<p>For uncompensated Baro-VNAV systems, LNAV/VNAV NA below -17°C or above 54°C.</p>		
AWOS-3 123.675	JOHNSTOWN APP CON * 121.2 299.2	UNICOM 122.7 (CTAF) 0



CATEGORY	A	B	C	D
LPV DA	1640-1½		483 (500-1½)	
LNAV/VNAV DA	2050-4		893 (900-4)	
LNAV MDA	1920-1 763 (800-1)	1920-1¼ 763 (800-1¼)	1920-2½	763 (800-2½)
CIRCLING	1920-1 758 (800-1)	1960-1¼ 798 (800-1¼)	2200-3 1038 (1100-3)	2940-3 1778 (1800-3)



NE-4, 14 MAY 2026 to 11 JUN 2026

NE-4, 14 MAY 2026 to 11 JUN 2026