

WAAS CH <b>56639</b> <b>W11A</b>	APP CRS <b>114°</b>	Rwy Ldg <b>2714</b> TDZE <b>15</b> Apt Elev <b>15</b>
--	------------------------	---

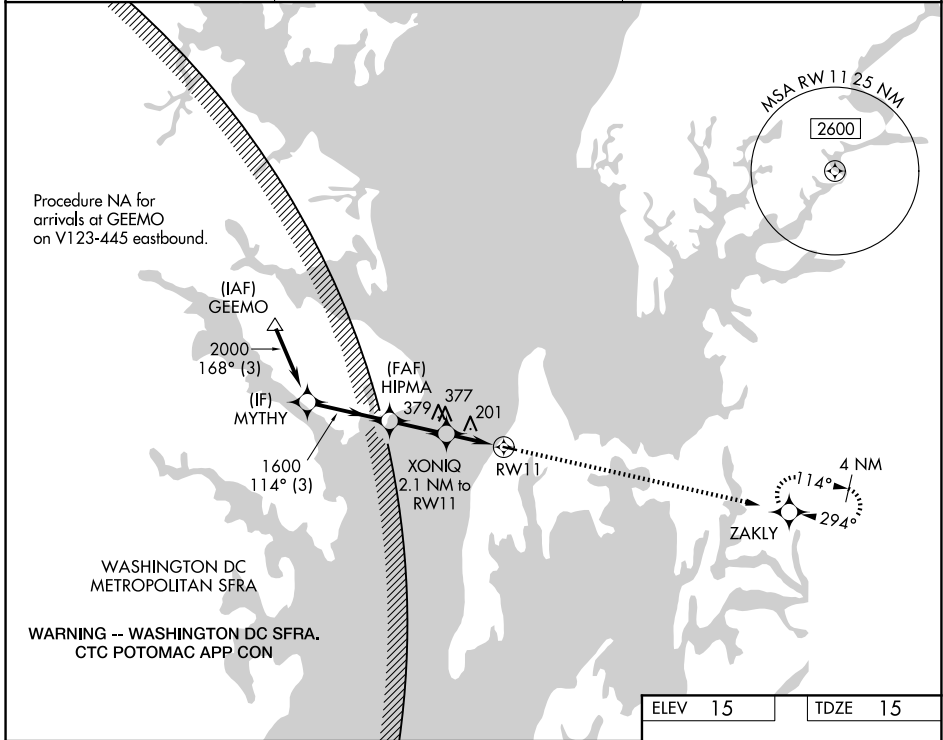
# RNAV (GPS) RWY 11

BAY BRIDGE (W29)

RNP APCH. MISSED APPROACH: Climb to 2100 direct ZAKLY and hold.

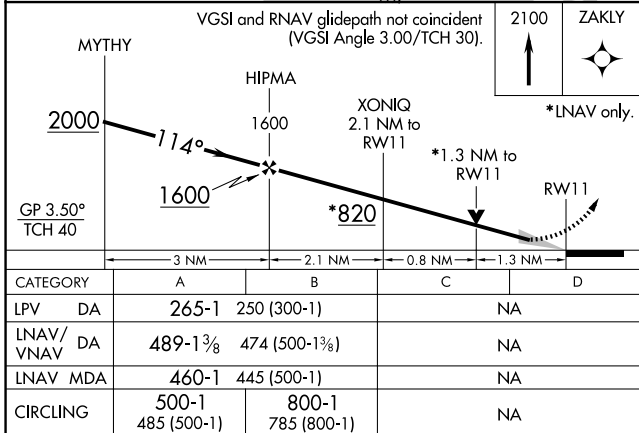
For uncompensated Baro-VNAV systems, LNAV/VNAV NA below -15°C or above 54°C.

AWOS-3 <b>120.575</b>	POTOMAC APP CON <b>119.0 282.275</b>	UNICOM <b>122.725 (CTAF) 0</b>
--------------------------	---	-----------------------------------



NE-3, 14 MAY 2026 to 11 JUN 2026

NE-3, 14 MAY 2026 to 11 JUN 2026



ELEV	15	TDZE	15
------	----	------	----

GP 3.50° TCH 40	2100	ZAKLY
	↑	✦
	*LNAV only.	

CATEGORY	A	B	C	D
LPV DA	265-1	250 (300-1)		NA
LNAV/VNAV DA	489-1 <sup>3</sup> / <sub>8</sub>	474 (500-1 <sup>3</sup> / <sub>8</sub> )		NA
LNAV MDA	460-1	445 (500-1)		NA
CIRCLING	500-1 485 (500-1)	800-1 785 (800-1)		NA

REIL Rwy 11 and 29 0  
MIRL Rwy 11-29 0