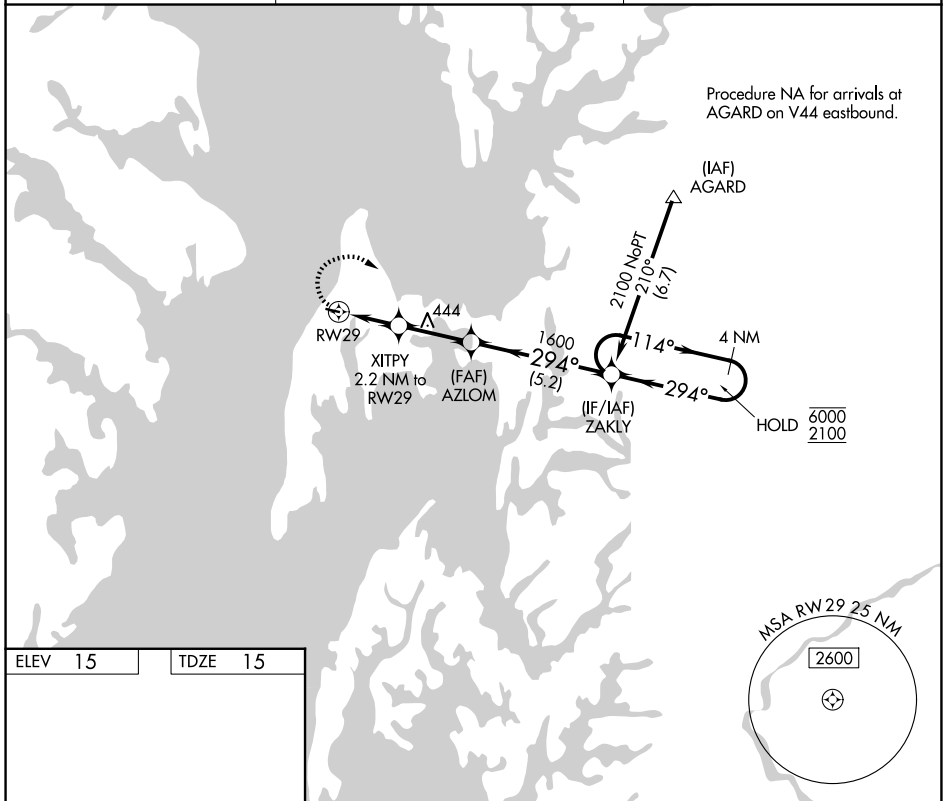


APP CRS	Rwy Ldg	<b>2714</b>
<b>294°</b>	TDZE	<b>15</b>
	Apt Elev	<b>15</b>

# RNAV (GPS) RWY 29

BAY BRIDGE (W29)

RNP APCH.		MISSED APPROACH: Climbing right turn to 2100 direct ZAKLY and hold.
<p>▼ Rwy 29 helicopter visibility reduction below 1 SM NA.</p> <p>▲</p>		
AWOS-3 <b>120.575</b>	POTOMAC APP CON <b>119.0 282.275</b>	UNICOM <b>122.725 (CTAF) 0</b>

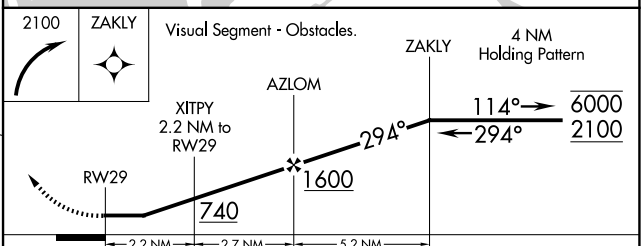
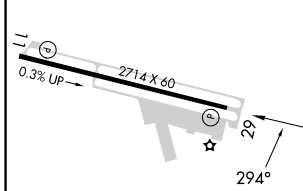


Procedure NA for arrivals at AGARD on V44 eastbound.

NE-3, 14 MAY 2026 to 11 JUN 2026

NE-3, 14 MAY 2026 to 11 JUN 2026

ELEV 15	TDZE 15
---------	---------



CATEGORY	A	B	C	D
LNAV MDA	480-1	465 (500-1)	NA	
CIRCLING	500-1 485 (500-1)	800-1 785 (800-1)	NA	

REIL Rws 11 and 29 0  
MIRL Rwy 11-29 0