

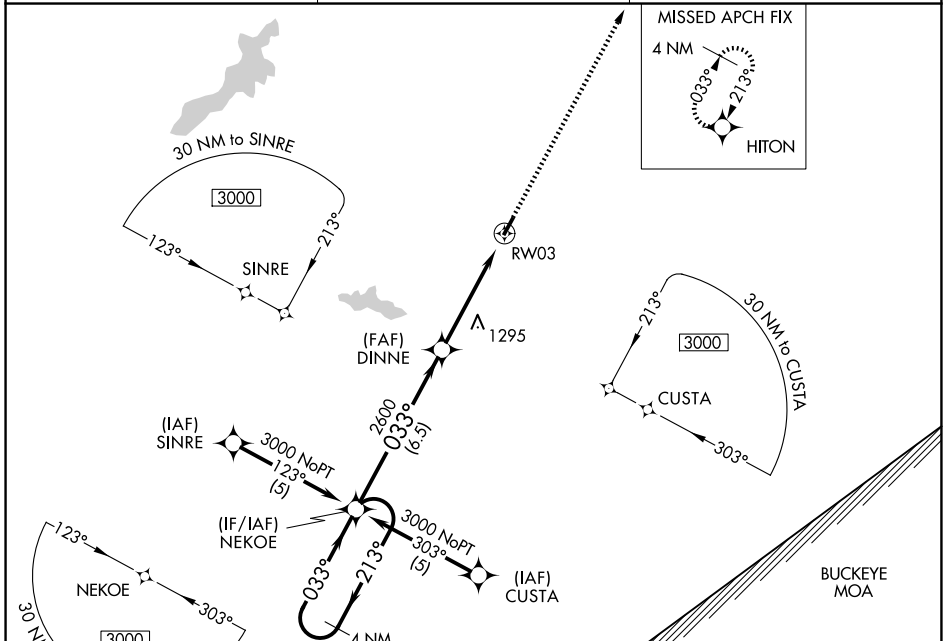
APP CRS	Rwy Ldg	3579
033°	TDZE	1033
	Apt Elev	1033

RNAV (GPS) RWY 3

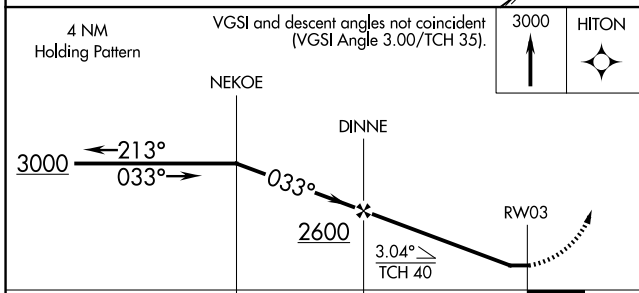
CLINTON FLD (I66)

RNP APCH - GPS.		MISSED APPROACH: Climb to 3000 direct HITON and hold.
<p>▽ When local altimeter setting not received, use ILLN altimeter setting and increase all MDAs 20 feet and LNAV visibility Cat C 1/8 SM. Rwy 3 helicopter visibility reduction below 3/4 SM NA.</p> <p>△ NA</p>		

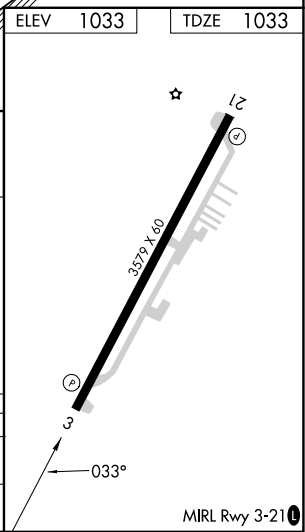
AWOS-3 124.175	COLUMBUS APP CON 118.85 269.275	UNICOM 122.725 (CTAF)
--------------------------	---	---------------------------------



ELEV	1033	TDZE	1033
------	------	------	------



CATEGORY	A	B	C	D
LNAV MDA	1600-1	567 (600-1)	1600-1 1/8 567 (600-1 1/8)	NA
CIRCLING	1740-1	707 (800-1)	1740-2 707 (800-2)	NA



EC-2, 14 MAY 2026 to 11 JUN 2026

EC-2, 14 MAY 2026 to 11 JUN 2026