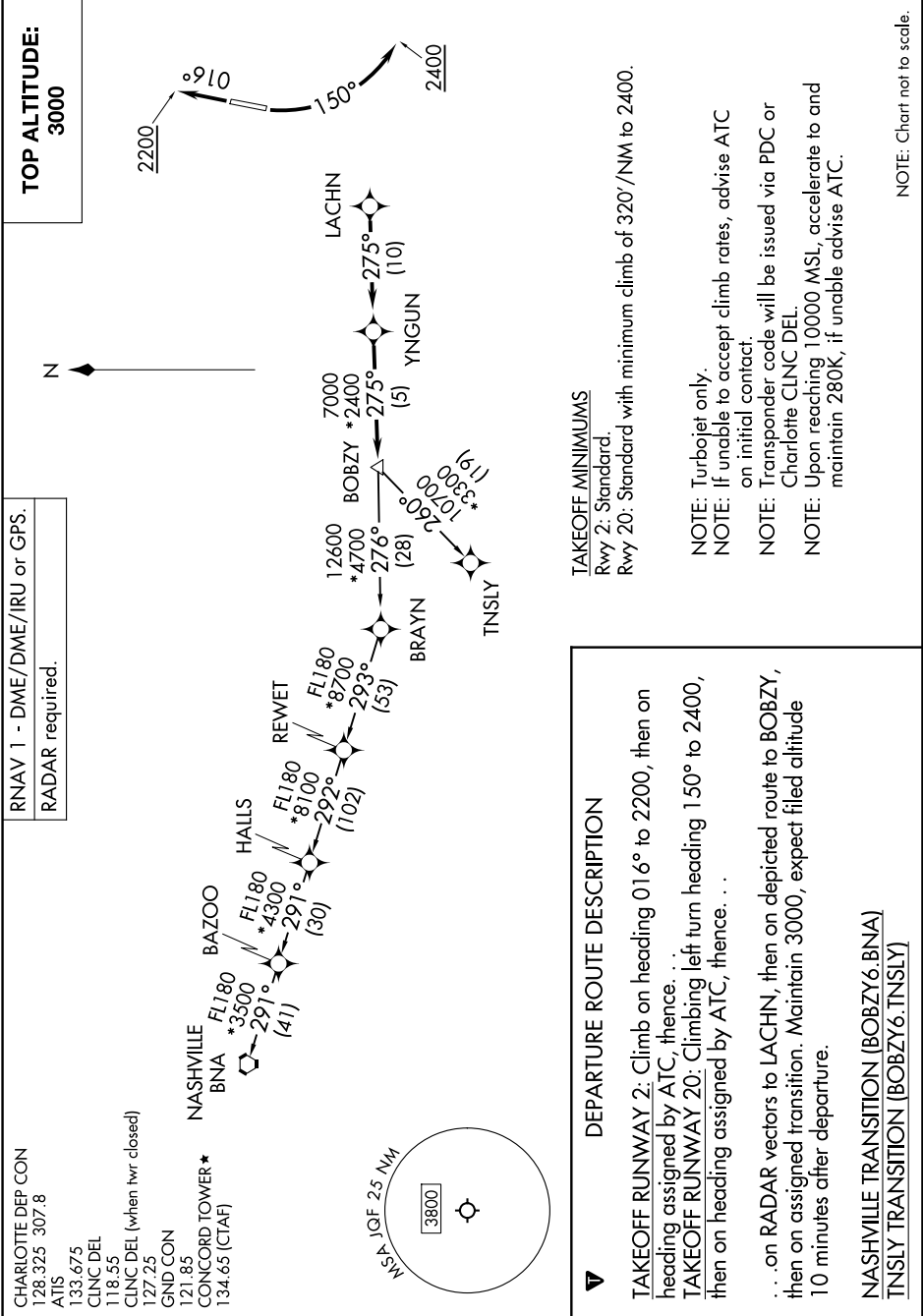


BOBZY SIX DEPARTURE (RNAV)

SE-2, 14 MAY 2026 to 11 JUN 2026



RNAV 1 - DME/DME/IRU or GPS.
RADAR required.

CHARLOTTE DEP CON
128.325 307.8
ATIS
133.675
CINC DEL
118.55
CINC DEL (when twr closed)
127.25
GND CON
121.85
CONCORD TOWER *
134.65 (CTAF)

DEPARTURE ROUTE DESCRIPTION

TAKEOFF RUNWAY 2: Climb on heading 016° to 2200, then on heading assigned by ATC, thence. . .

TAKEOFF RUNWAY 20: Climbing left turn heading 150° to 2400, then on heading assigned by ATC, thence. . .

. . . on RADAR vectors to LACHIN, then on depicted route to BOBZY, then on assigned transition. Maintain 3000, expect filed altitude 10 minutes after departure.

NASHVILLE TRANSITION (BOBZY6.BNA)
TNSLY TRANSITION (BOBZY6.TNSLY)

TAKEOFF MINIMUMS
Rwy 2: Standard.
Rwy 20: Standard with minimum climb of 320'/NM to 2400.

NOTE: Turbojet only.
NOTE: If unable to accept climb rates, advise ATC on initial contact.
NOTE: Transponder code will be issued via PDC or Charlotte CLNC DEL.
NOTE: Upon reaching 10000 MSL, accelerate to and maintain 280K, if unable advise ATC.

NOTE: Chart not to scale.

BOBZY SIX DEPARTURE (RNAV)

SE-2, 14 MAY 2026 to 11 JUN 2026