

(ESTRR6.ESTRR) 26134

AL-9155 (FAA)

CONCORD-PADGETT RGNL (JQF)
CONCORD, NORTH CAROLINA

ESTRR SIX DEPARTURE (RNAV)

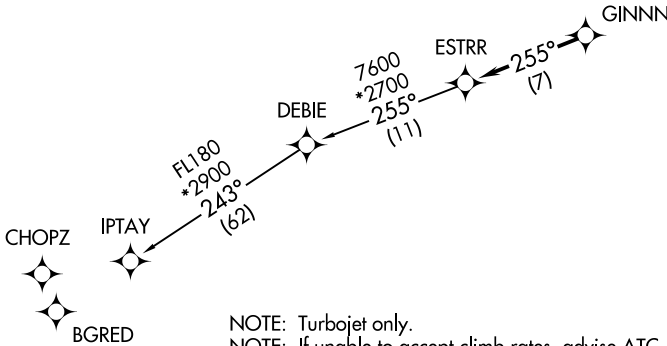
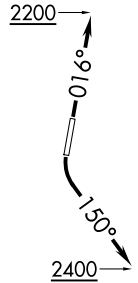
CHARLOTTE DEP CON
128.325 307.8
ATIS
133.675
CLNC DEL
118.55
CLNC DEL (When twr closed)
127.25
GND CON
121.85
CONCORD TOWER ★
134.65 (CTAF)

RNAV 1 - DME/DME/IRU or GPS.
RADAR required.

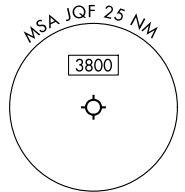
**TOP ALTITUDE:
3000**

TAKEOFF MINIMUMS

Rwy 2: Standard.
Rwy 20: Standard with minimum
climb of 320'/NM to 2400.



- NOTE: Turbojet only.
- NOTE: If unable to accept climb rates, advise ATC on initial contact.
- NOTE: Transponder code will be issued via PDC or CLT CLNC DEL.
- NOTE: Upon reaching 10000 MSL, accelerate to and maintain 280K, if unable advise ATC.



NOTE: Chart not to scale.

DEPARTURE ROUTE DESCRIPTION

TAKEOFF RUNWAY 2: Climb on heading 016° to 2200, then on heading assigned by ATC, thence. . .

TAKEOFF RUNWAY 20: Climbing left turn heading 150° to 2400, then on heading assigned by ATC, thence. . .

. . .for RADAR vectors to GINNN, then on track 255° to ESTRR, then on IPTAY Transition. Maintain 3000, expect filed altitude 10 minutes after departure.

IPTAY TRANSITION (ESTRR6.IPTAY)

ESTRR SIX DEPARTURE (RNAV)
(ESTRR6.ESTRR) 14MAY26

CONCORD, NORTH CAROLINA
CONCORD-PADGETT RGNL (JQF)

SE-2, 14 MAY 2026 to 11 JUN 2026

SE-2, 14 MAY 2026 to 11 JUN 2026