

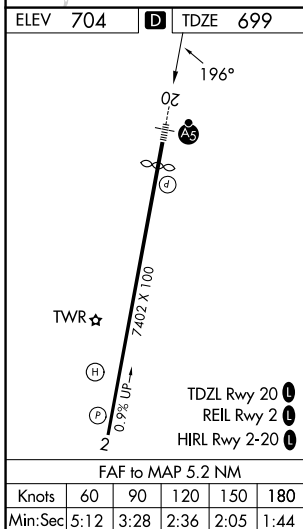
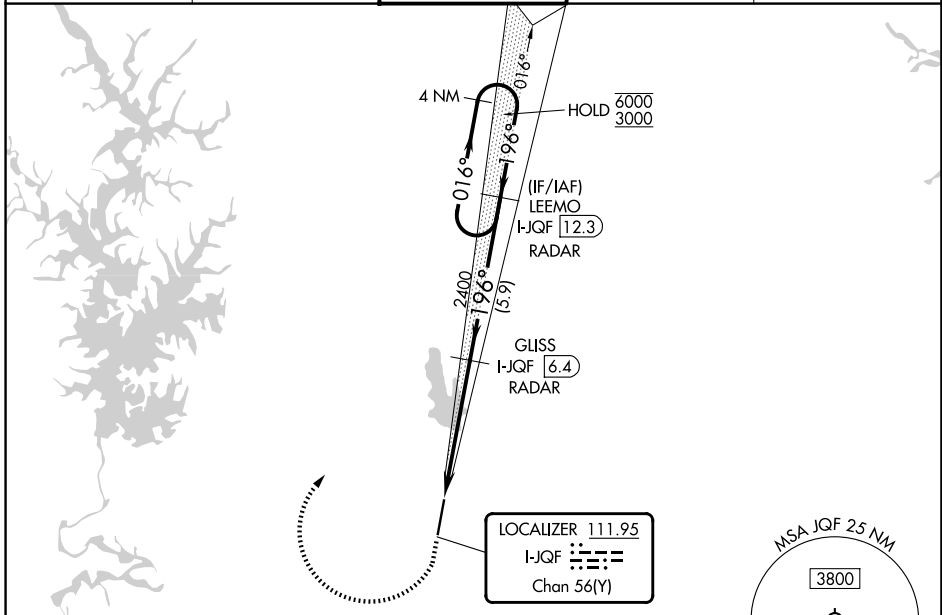
LOC/DME I-JQF <b>111.95</b> Chan <b>56(Y)</b>	APP CRS <b>196°</b>	Rwy Ldg TDZE Apt Elev <b>6350</b> <b>699</b> <b>704</b>
---	------------------------	--

# ILS or LOC RWY 20

CONCORD-PADGETT RGNL (JQF)

RNP APCH - GPS. ▼ ▲ NA Rwy 20 helicopter visibility reduction below 3/4 SM NA. Inop table does not apply to S-ILS-20. For inop ALS, increase S-LOC-20 Cats A and B visibility to 1 SM, Cats C and D visibility to 1 1/2 SM.	MALSR 65	MISSED APPROACH: Climb to 1300 then climbing right turn to 3000 direct LEEMO and hold.
--	-------------	--

ATIS <b>133.675</b>	CHARLOTTE APP CON <b>128.325 307.8</b>	CONCORD TOWER ★ <b>134.65 (CTAF)</b>	GND CON <b>121.85</b>	UNICOM <b>122.95</b>
------------------------	---	---	--------------------------	-------------------------



ELEV 704	D	TDZE 699		
1300	3000	LEEMO I-JQF [12.3]		
GLISS I-JQF [6.4] RADAR	LEEMO I-JQF [12.3] RADAR	4 NM Holding Pattern		
I-JQF [1.2]	I-JQF [2.8]	2400		
1.6 NM	3.6 NM	5.9 NM		
016°	196°	6000		
		3000		
		GS 3.00° TCH 44		
CATEGORY	A	B	C	D
S-ILS 20		1041-3/4	342 (400-3/4)	
S-LOC 20	1260-3/4	561 (600-3/4)	1260-1/4	561 (600-1/4)
CIRCLING	1300-1	596 (600-1)	1480-2 1/4	1480-2 1/2
			776 (800-2 1/4)	776 (800-2 1/2)

SE-2, 14 MAY 2026 to 11 JUN 2026

SE-2, 14 MAY 2026 to 11 JUN 2026