

KILNS SIX DEPARTURE (RNAV)

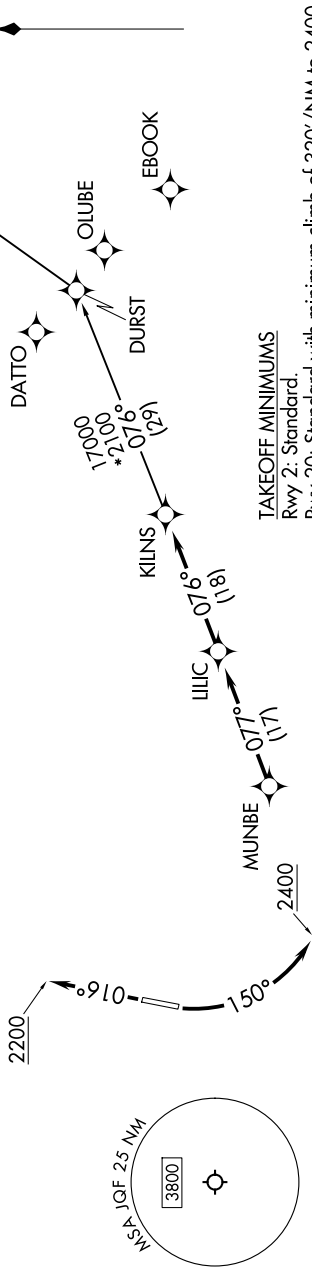
SE-2, 14 MAY 2026 to 11 JUN 2026

CHARLOTTE DEP CON
128.325 307.8
ATIS
133.675
CLNC DEL
118.55
CLNC DEL (when twr closed)
127.25
GND CON
121.85
CONCORD TOWER *
134.65 (CTAF)

RNAV 1 - DME/DME/IRU or GPS.
RADAR required.

TOP ALTITUDE:
3000

NOTE: Turbojet only.
NOTE: If unable to accept climb rates, advise ATC on initial contact.
NOTE: Transponder code will be issued via PDC or CLT CLNC DEL.
NOTE: Upon reaching 10000 MSL, accelerate to and maintain 280K, if unable advise ATC.



NOTE: Chart not to scale.

DEPARTURE ROUTE DESCRIPTION

TAKEOFF RUNWAY 2: Climb on heading 016° to 2200, then on heading assigned by ATC, thence...
TAKEOFF RUNWAY 20: Climbing left turn heading 150° to 2400, then on heading assigned by ATC, thence...

... for RADAR vectors to MUNBE, then on depicted route to KILNS. Then on assigned transition. Maintain 3000, expect filed altitude 10 minutes after departure.

AUDII TRANSITION (KILNS6.AUDII)

SE-2, 14 MAY 2026 to 11 JUN 2026

KILNS SIX DEPARTURE (RNAV)