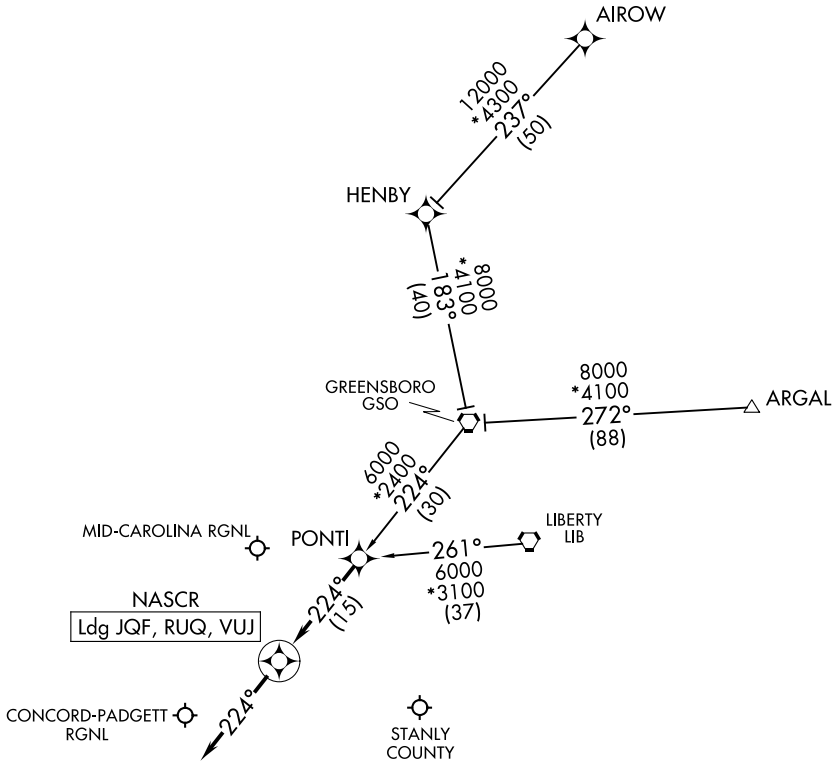


# NASCR ONE ARRIVAL (RNAV)

CONCORD, NORTH CAROLINA

CHARLOTTE APP CON  
128.325  
JQF ATIS  
133.675

RNAV 1 - DME/DME/IRU or GPS.  
RADAR required.



SE-2, 14 MAY 2026 to 11 JUN 2026

SE-2, 14 MAY 2026 to 11 JUN 2026

NOTE: Chart not to scale.

## ARRIVAL ROUTE DESCRIPTION

- AIROW TRANSITION (AIROW.NASCR1)
- ARGAL TRANSITION (ARGAL.NASCR1)
- GREENSBORO TRANSITION (GSO.NASCR1)
- LIBERTY TRANSITION (LIB.NASCR1)

LANDING ALL AIRPORTS: From PONTI on track 224° to NASCR, then on track 224°. Expect RADAR vectors to final approach course.