

WAAS CH 93903 W02A	APP CRS 016°	Rwy Ldg TDZE Apt Elev	7400 667 705
--	------------------------	-----------------------------	---

RNAV (GPS) RWY 2

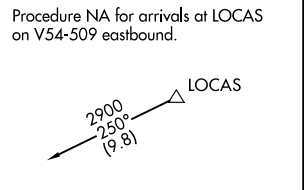
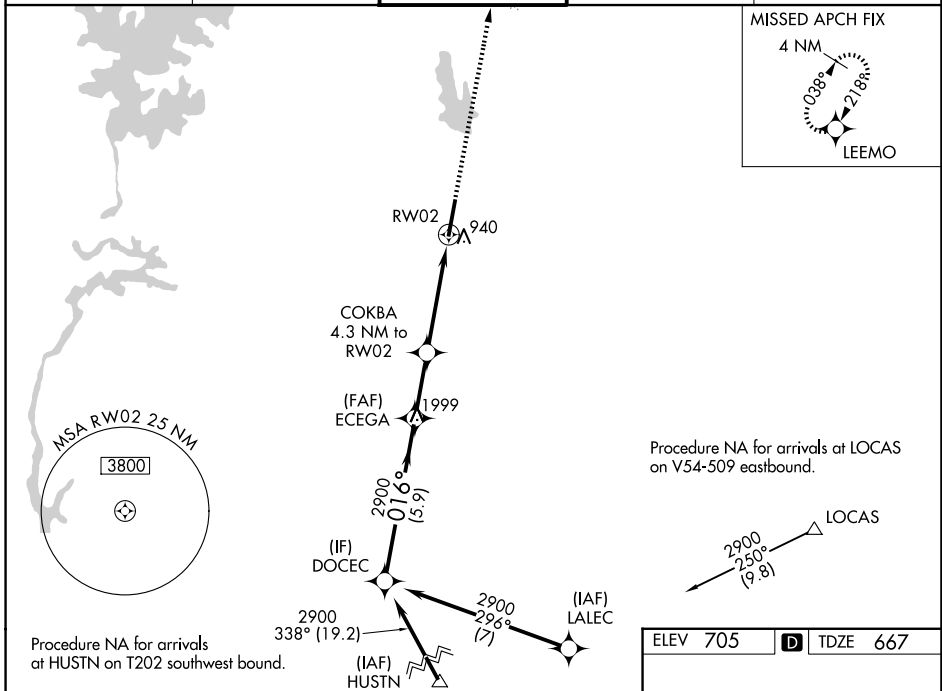
CONCORD-PADGETT RGNL (JQF)

RNP APCH.

▽ Rwy 2 helicopter visibility reduction below 3/4 SM NA.
▲ For uncompensated Baro-VNAV systems, LNAV/VNAV NA below -16°C or above 45°C.

MISSED APPROACH: Climb to 4000 direct LEEMO and hold, continue climb-in-hold to 4000.

ATIS 133.675	CHARLOTTE APP CON 128.325 307.8	CONCORD TOWER ★ 134.65 (CTAF) 0	GND CON 121.85	UNICOM 122.95
------------------------	---	---	--------------------------	-------------------------

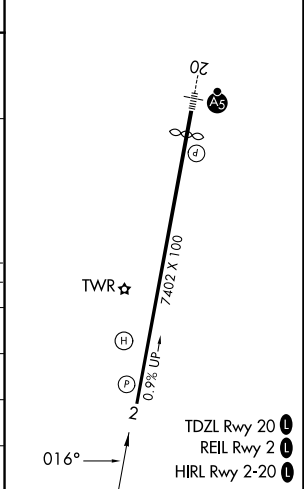


ELEV 705	D TDZE 667
----------	-------------------

VGSI and RNAV glidepath not coincident (VGSI Angle 3.50/TCH 69).

DOCEC	ECEGA	COKBA	RWY 2
2900	2900	2100	4000
GP 3.10° TCH 60	016°	*2100	LEEMO
5.9 NM	2.4 NM	2.9 NM	1.4 NM
4.3 NM to RWY 2	*1.4 NM to RWY 2		
*LNAV only.			

CATEGORY	A	B	C	D
LPV DA		986-1 1/8	319 (300-1 1/8)	
LNAV/VNAV DA		1220-1 1/8	553 (600-1 1/8)	
LNAV MDA	1240-1	573 (600-1)	1240-1 1/8	573 (600-1 1/8)
CIRCLING	1300-1	595 (600-1)	1480-2 1/4 775 (800-2 1/4)	1480-2 1/2 775 (800-2 1/2)



SE-2, 14 MAY 2026 to 11 JUN 2026

SE-2, 14 MAY 2026 to 11 JUN 2026