

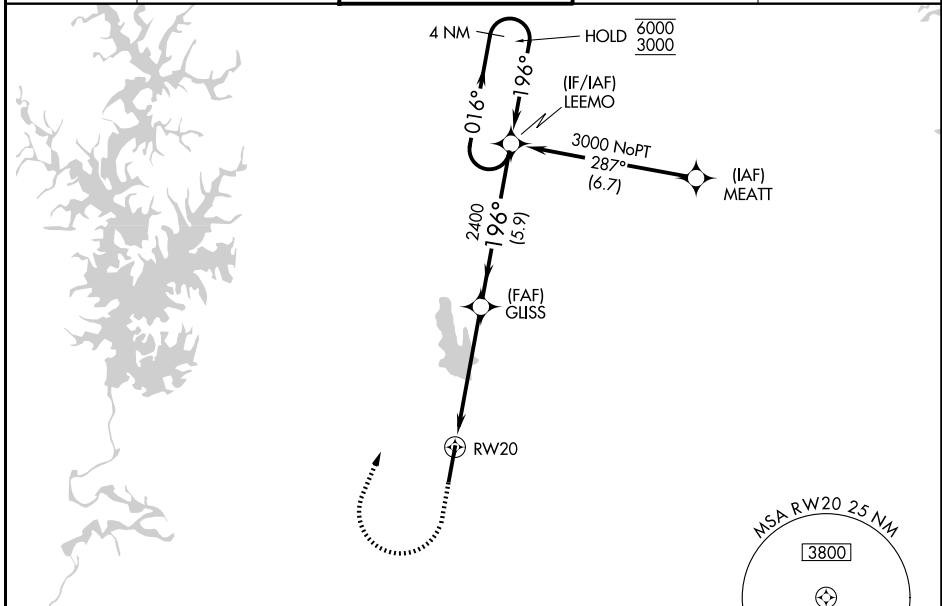
WAAS CH <b>56499</b> <b>W20A</b>	APP CRS <b>196°</b>	Rwy Ldg TDZE Apt Elev	<b>6350</b> <b>699</b> <b>704</b>
--	------------------------	-----------------------------	---

# RNAV (GPS) RWY 20

CONCORD-PADGETT RGNL (JQF)

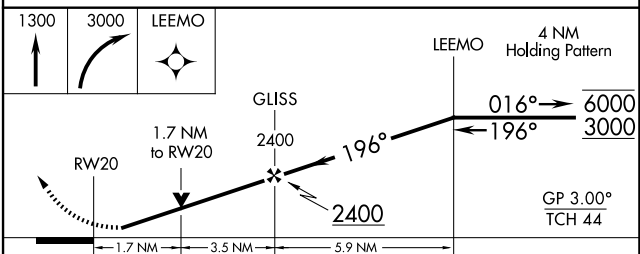
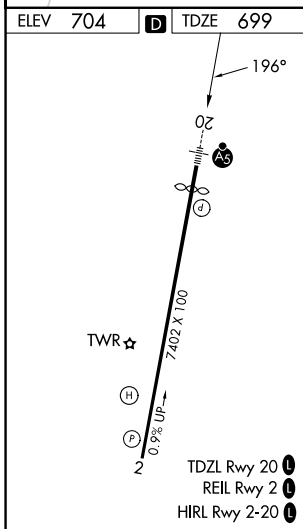
RNP APCH-GPS. <b>⚠</b> For uncompensated Baro-VNAV systems, LNAV/VNAV NA below -16°C or above 54°C. Rwy 20 helicopter visibility reduction below 3/4 SM NA. For inop ALS, increase LNAV Cats A and B visibility to 1 SM and Cats C and D visibility to 1 1/4 SM.	MALSRL 	MISSED APPROACH: Climb to 1300 then climbing right turn to 3000 direct LEEMO and hold.
---	------------	--

ATIS <b>133.675</b>	CHARLOTTE APP CON <b>128.325 307.8</b>	CONCORD TOWER ★ <b>134.65 (CTAF)</b>	GND CON <b>121.85</b>	UNICOM <b>122.95</b>
------------------------	---	---	--------------------------	-------------------------



SE-2, 14 MAY 2026 to 11 JUN 2026

SE-2, 14 MAY 2026 to 11 JUN 2026



CATEGORY	A	B	C	D
LPV DA		1041-3/4	342 (400-3/4)	
LNAV/VNAV DA		1222-1	523 (600-1)	
LNAV MDA	1300-1	601 (600-1)	1300-1 3/8	601 (600-1 1/8)
CIRCLING	1300-1	596 (600-1)	1480-2 1/4 776 (800-2 1/4)	1480-2 1/2 776 (800-2 1/2)