

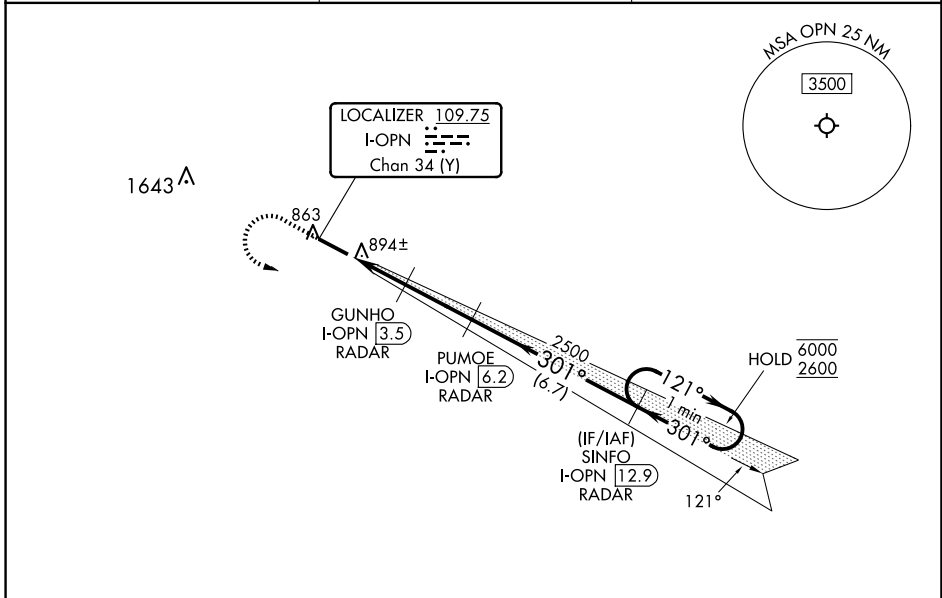
LOC/DME I-OPN <b>109.75</b> Chan 34 (Y)	APP CRS <b>301°</b>	Rwy Idg <b>4962</b> TDZE <b>796</b> Apt Elev <b>798</b>
---	------------------------	---

# ILS or LOC RWY 30

THOMASTON-UPSON COUNTY (OPN)

RNP APCH - GPS.	MALSRL 	MISSED APPROACH: Climb to 1500 then climbing left turn to 2600 direct SINFO and hold.
DME or RADAR required.		
For inop ALS, increase S-LOC 30 Cats C, D visibility to 1 SM.		

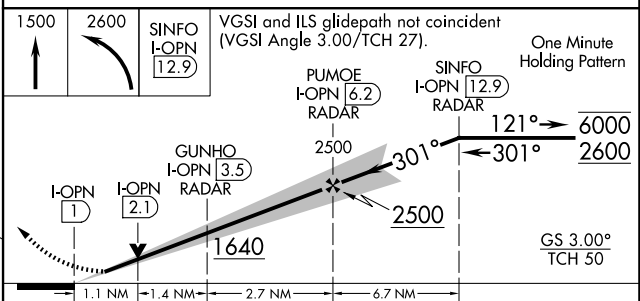
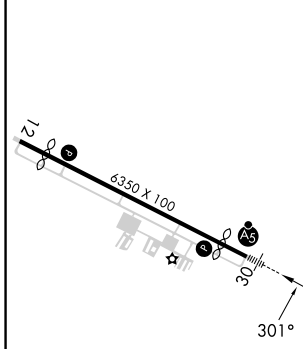
AWOS-3 <b>133,975</b>	ATLANTA APP CON * <b>124.2 279.6</b>	UNICOM <b>122.8 (CTAF) 0</b>
--------------------------	---	---------------------------------



SE-4, 14 MAY 2026 to 11 JUN 2026

SE-4, 14 MAY 2026 to 11 JUN 2026

ELEV 798	<b>D</b>	TDZE 796
----------	----------	----------



CATEGORY	A	B	C	D
S-ILS 30		1016-1/2	220 (300-1/2)	
S-LOC 30	1160-1/2	364 (400-1/2)	1160-5/8	364 (400-5/8)
CIRCLING	1240-1 442 (500-1)	1260-1 462 (500-1)	1260-1 1/2 462 (500-1 1/2)	1680-3 882 (900-3)

MIRL Rwy 12-30 0					
FAF to MAP 5.2 NM					
Knots	60	90	120	150	180
Min:Sec	5:12	3:28	2:36	2:05	1:44