

WAAS CH <b>56309</b> <b>W03A</b>	APP CRS <b>029°</b>	Rwy Ldg <b>5498</b> TDZE <b>940</b> Apt Elev <b>948</b>
--	------------------------	---

# RNAV (GPS) RWY 3

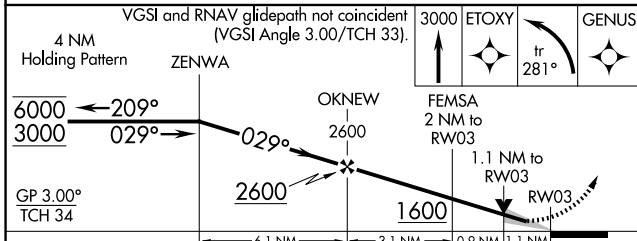
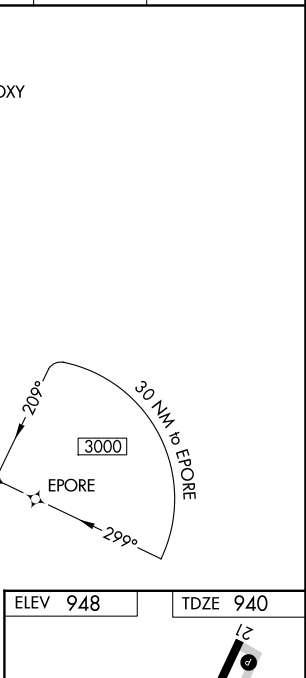
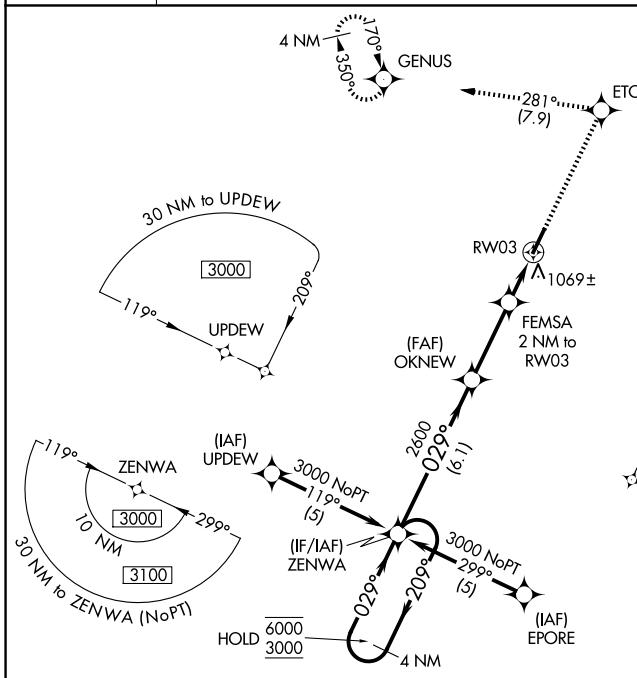
GEORGETOWN-SCOTT COUNTY RGNL (27K)

RNP APCH - GPS.

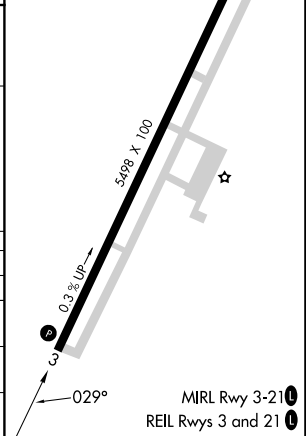
**⚠** For uncompensated Baro-VNAV systems, LNAV/VNAV NA below -16°C or above 54°C. Baro-VNAV and VDP NA when using LEX altimeter setting. When local altimeter setting not received, use LEX altimeter setting: increase LPV DA to 1178 feet; increase LNAV/VNAV DA to 1358 feet and all visibilities ½ SM; increase all MDAs 40 feet and LNAV visibility Cat C/D ⅓ SM, and Circling visibility Cat D ¼ SM

MISSED APPROACH: Climb to 3000 direct ETOXY and left turn on track 281° to GENUS and hold, continue climb-in-hold to 3000.

AWOS-3 <b>119.975</b>	LEXINGTON APP CON <b>120.15 259.3</b> (040°-220°) <b>120.75 298.9</b> (221°-039°)	CLNC DEL <b>127.425</b>	UNICOM <b>123.0</b> (CTAF) <b>0</b>
--------------------------	--	----------------------------	--



CATEGORY	A	B	C	D
LPV DA		1140-3/4	200 (200-3/4)	
LNAV/VNAV DA		1320-1	380 (400-1)	
LNAV MDA		1320-1	380 (400-1)	
CIRCLING	1420-1	472 (500-1)	1560-1 3/4 612 (700-1 3/4)	1660-2 1/4 712 (800-2 1/4)



SE-1, 14 MAY 2026 to 11 JUN 2026

SE-1, 14 MAY 2026 to 11 JUN 2026