

RNAV (GPS) Y RWY 21

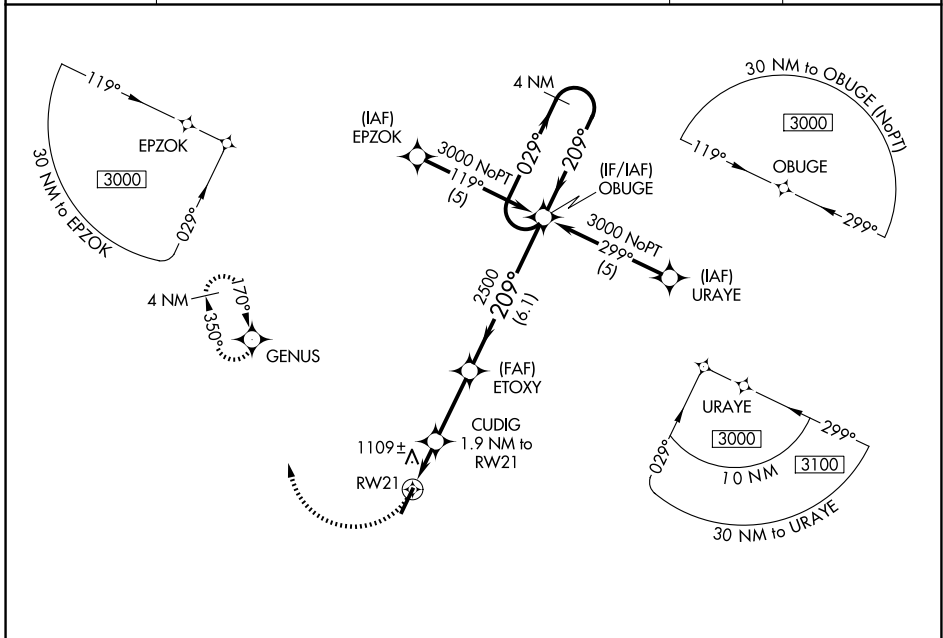
GEORGETOWN-SCOTT COUNTY RGNL (27K)

APP CRS	Rwy Ldg	5498
209°	TDZE	948
	Apt Elev	948

NA DME/DME RNP-0.3 NA. VDP NA with Lexington altimeter setting. When local altimeter setting not received, use Lexington altimeter setting and increase all MDAs 40 feet, increase LNAV Cats C/D and Circling Cat D visibility ¼ SM.

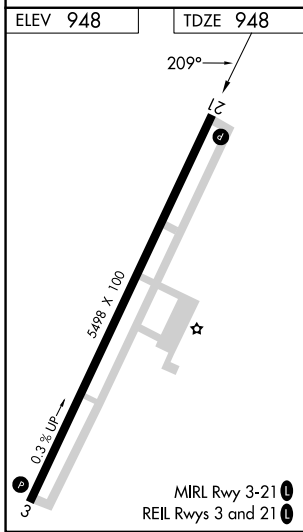
MISSED APPROACH: Climbing right turn to 3000 direct GENUS and hold.

AWOS-3 119.975	LEXINGTON APP CON 120.15 259.3 (040°-220°) 120.75 298.9 (221°-039°)	CLNC DEL 127.425	UNICOM 123.0 (CTAF) 0
--------------------------	--	----------------------------	--



SE-1, 14 MAY 2026 to 11 JUN 2026

SE-1, 14 MAY 2026 to 11 JUN 2026



3000	GENUS	CUDIG 1.9 NM to RW21	ETOXY	OBUGE	4 NM Holding Pattern
		1.2 NM to RW21	3.04° TCH 30	209°	029°
		1.2 NM	0.7 NM	2.8 NM	6.1 NM
CATEGORY	A	B	C	D	
LNAV MDA	1360-1	412 (500-1)	1360-1¼	412 (500-1¼)	
CIRCLING	1420-1	472 (500-1)	1560-1¾ 612 (700-1¾)	1660-2¼ 712 (800-2¼)	