

WAAS CH 48909 W21A	APP CRS 209°	Rwy Ldg TDZE 948 Apt Elev 948
--	------------------------	---

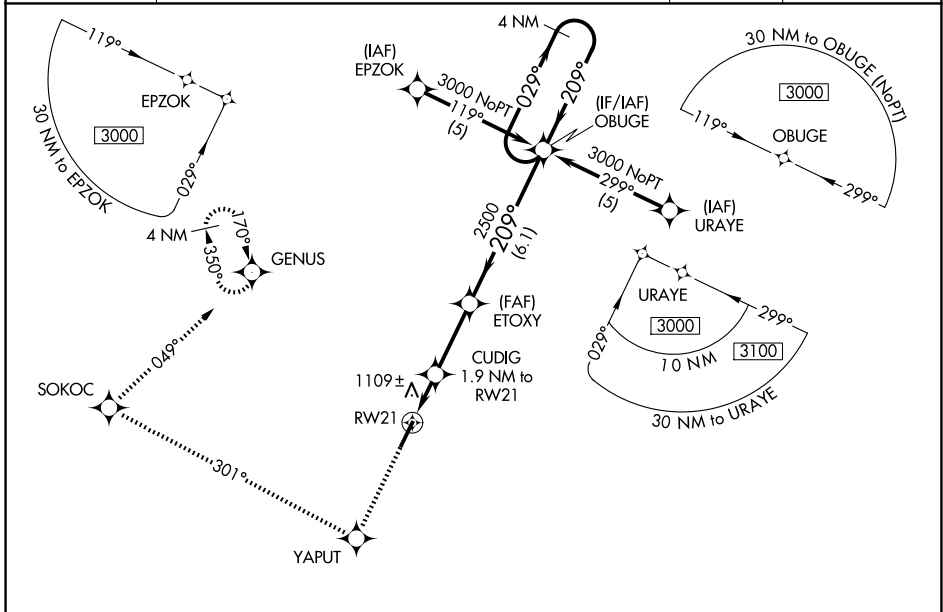
RNAV (GPS) Z RWY 21

GEORGETOWN-SCOTT COUNTY RGNL (27K)

NA For uncompensated Baro-VNAV systems, LNAV/VNAV NA below -16° C (4° F) or above 46° C (114° F). DME/DME RNP-0.3 NA. When local altimeter setting not received, use Lexington altimeter setting and increase LPV DA to 1186, LNAV/VNAV DA to 1460, and all MDA 40 feet; increase LPV all Cats and LNAV Cats C/D and Circling Cat D visibility ¼ SM. Baro-VNAV and VDP NA with Lexington altimeter setting.

MISSED APPROACH: Climb to 3000 direct YAPUT and right turn on track 301° to SOKOC and right turn on track 049° to GENUS and hold.

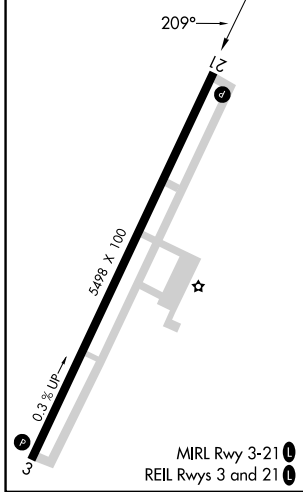
AWOS-3 119.975	LEXINGTON APP CON 120.15 259.3 (040°-220°) 120.75 298.9 (221°-039°)	CLNC DEL 127.425	UNICOM 123.0 (CTAF) 0
--------------------------	--	----------------------------	--



SE-1, 14 MAY 2026 to 11 JUN 2026

SE-1, 14 MAY 2026 to 11 JUN 2026

ELEV 948	TDZE 948
----------	----------



3000	YAPUT	SOKOC	GENUS	4 NM Holding Pattern
↑	✧	↶ Ir 301°	↶ Ir 049°	✧
*LNAV only.				
RWY 21		CUDIG 1.9 NM to RWY 21	ETOXY 2500	OBUGE 3000
↶ 1.2 NM to RWY 21		↶ *1580	↶ 2500	↶ 029°
↶ 0.7 NM		↶ 2.8 NM	↶ 6.1 NM	↶ 209°
CATEGORY	A	B	C	D
LPV DA		1148-¾	200 (200-¾)	
LNAV/VNAV DA		1422-1¾	474 (500-1¾)	
LNAV MDA	1360-1	412 (500-1)	1360-1¼	412 (500-1¼)
CIRCLING	1420-1	472 (500-1)	1560-1¾	1660-2¼
			612 (700-1¾)	712 (800-2¼)