

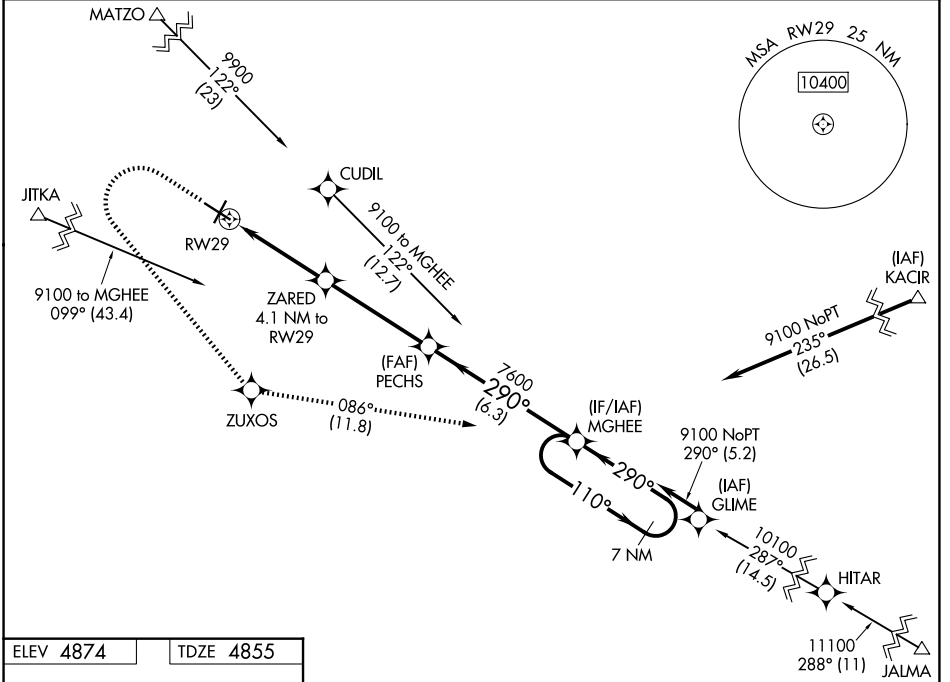
WAAS CH <b>72740</b> <b>W29A</b>	APP CRS <b>290°</b>	Rwy Ldg TDZE Apt Elev	<b>6300</b> <b>4855</b> <b>4874</b>
--	------------------------	-----------------------------	---

# RNAV (GPS) RWY 29

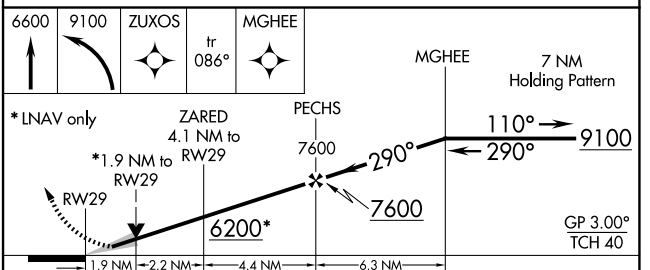
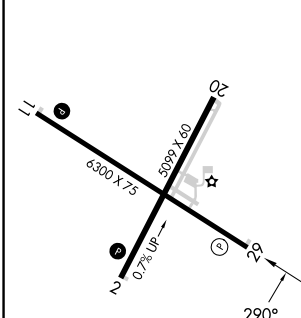
COLORADO CITY MUNI (AZC)

RNP APCH.	MISSED APPROACH: Climb to 6600 then climbing left turn to 9100 direct ZUXOS and track 086° to MGHEE and hold.
Baro-VNAV NA. Circling NA for Cat D north of Rwy 11-29.	

AWOS-3PT <b>118.375</b>	LOS ANGELES CENTER <b>124.2 343.6</b>	UNICOM <b>122.7 (CTAF)</b>
----------------------------	--	-------------------------------



ELEV 4874	TDZE 4855
-----------	-----------



CATEGORY	A	B	C	D
LPV DA		5105-1	250 (300-1)	
LNAV/VNAV DA		5157-1	302 (300-1)	
LNAV MDA	5500-1	645 (700-1)	5500-1 $\frac{7}{8}$	645 (700-1 $\frac{7}{8}$ )
CIRCLING	5500-1 626 (700-1)	5520-1 646 (700-1)	6880-3	2006 (2100-3)

REIL Rwy 11   
 REIL Rwy 29  
 MIRL Rwy 11-29 and 2-20

SW-4, 14 MAY 2026 to 11 JUN 2026

SW-4, 14 MAY 2026 to 11 JUN 2026