

WAAS CH 86722 W36A	APP CRS 357°	Rwy Ldg TDZE Apt Elev	6002 317 317
--	------------------------	-----------------------------	---

RNAV (GPS) RWY 36

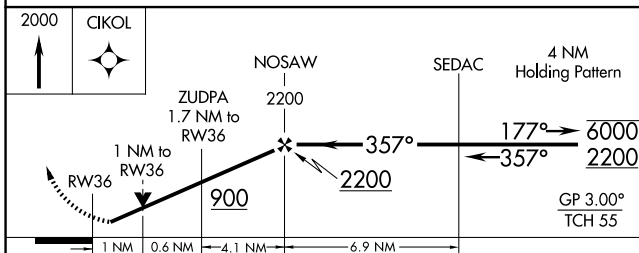
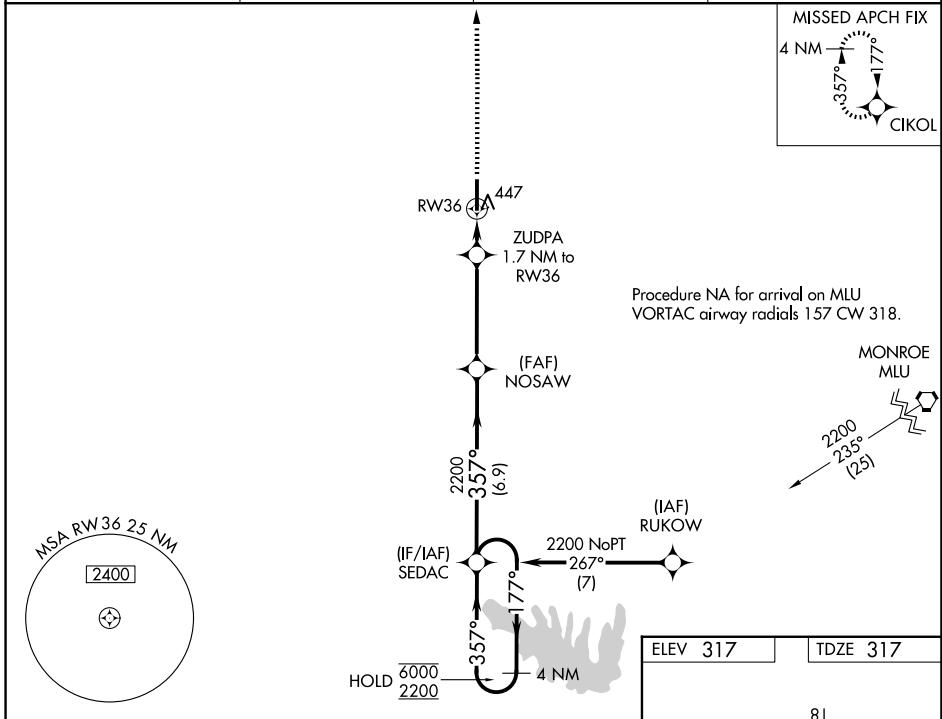
RUSTON RGNL (RSN)

RNP APCH - GPS.

▼ Rwy 36 helicopter visibility reduction below 3/4 SM NA.
▲ For uncompensated Baro-VNAV systems, LNAV/VNAV NA below -15°C or above 54°C.

MISSED APPROACH: Climb to 2000 direct CIKOL and hold.

AWOS-3PT 119.525	MONROE APP CON * 126.9 307.9	CLNC DEL 118.8	UNICOM 122.7 (CTAF) 0
----------------------------	--	--------------------------	---------------------------------



ELEV 317	TDZE 317
----------	----------

CATEGORY	A	B	C	D
LPV DA		602-3/4	285 (300-3/4)	
LNAV/VNAV DA		628-3/4	311 (400-3/4)	
LNAV MDA	700-3/4	383 (400-3/4)	700-1	383 (400-1)
CIRCLING	760-1 443 (500-1)	780-1 463 (500-1)	900-1 1/2 583 (600-1 1/2)	960-2 643 (700-2)

MIRL Rwy 18-36 0
REIL Rwys 18 and 36 0

SC-4, 14 MAY 2026 to 11 JUN 2026

SC-4, 14 MAY 2026 to 11 JUN 2026