

WAAS CH <b>45707</b> <b>W33A</b>	APP CRS <b>327°</b>	Rwy Ldg TDZE <b>1162</b> Apt Elev <b>1165</b>
--	------------------------	---

# RNAV (GPS) RWY 33

NEBRASKA CITY MUNI (AFK)

RNP APCH - GPS.

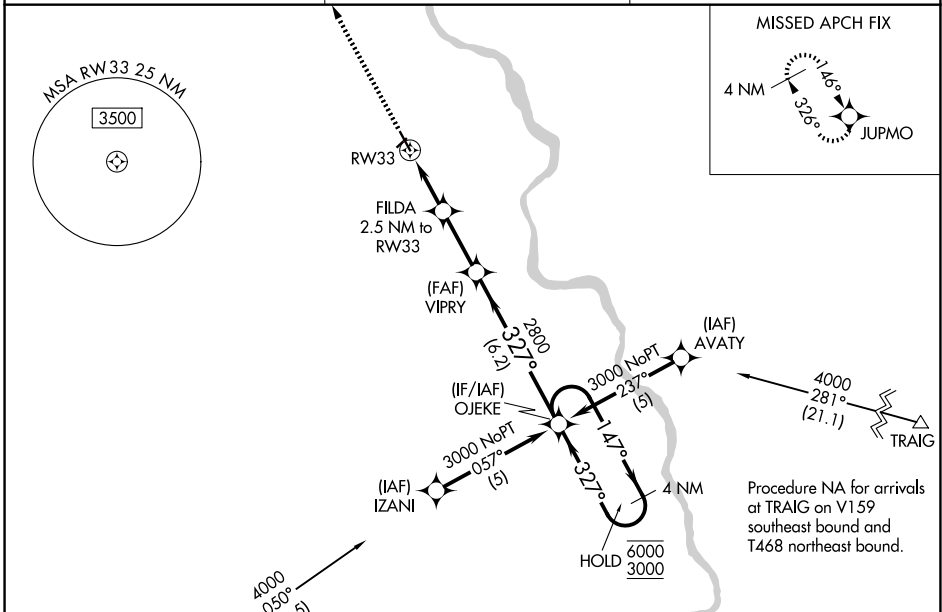
**⚠** Circling NA to Rws 5 and 23. For uncompensated Baro-VNAV systems, LNAV/VNAV NA below -17°C or above 54°C.

MISSED APPROACH: Climb to 3000 direct JUPMO and hold.

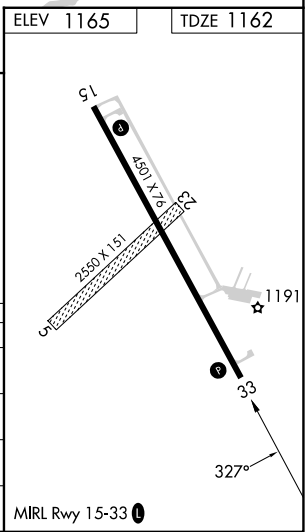
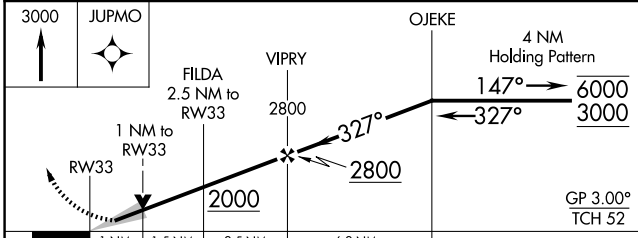
AWOS-3PT  
**128.325**

OMAHA APP CON  
**135.875 354.05**

UNICOM  
**122.7 (CTAF) 0**



ELEV 1165	TDZE 1162
-----------	-----------



CATEGORY	A	B	C	D
LPV DA	1362-1	200 (200-1)		NA
LNAV/VNAV DA	1421-1	259 (300-1)		NA
LNAV MDA	1520-1	358 (400-1)		NA
CIRCLING	1640-1	475 (500-1)		NA

NC-2, 14 MAY 2026 to 11 JUN 2026

NC-2, 14 MAY 2026 to 11 JUN 2026