

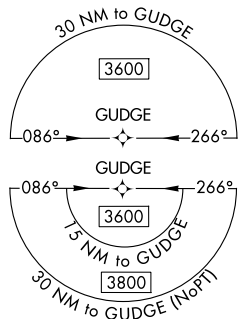
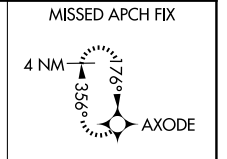
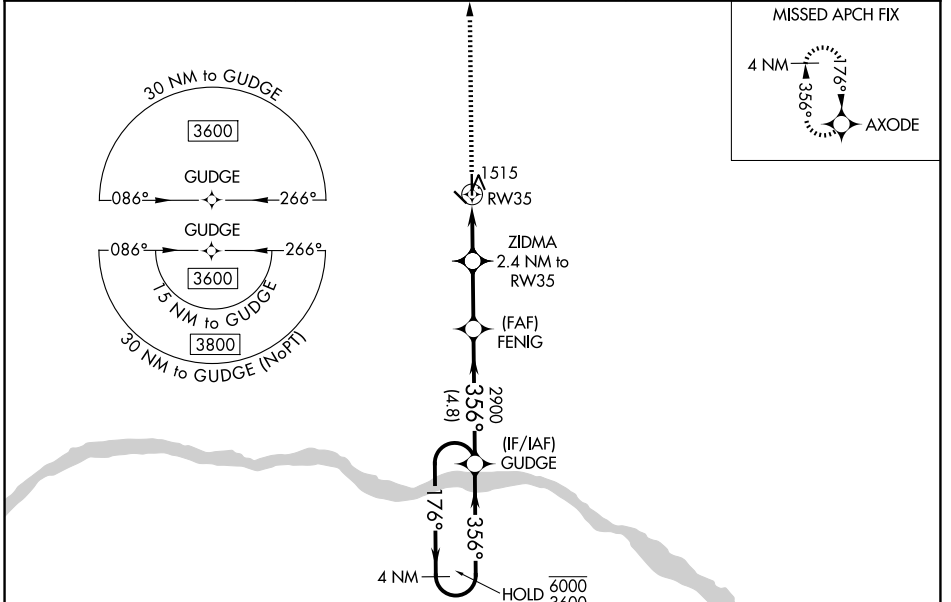
WAAS CH 62934 W35A	APP CRS 356°	Rwy Ldg 4200 TDZE 1320 Apt Elev 1325
--	------------------------	---

RNAV (GPS) RWY 35

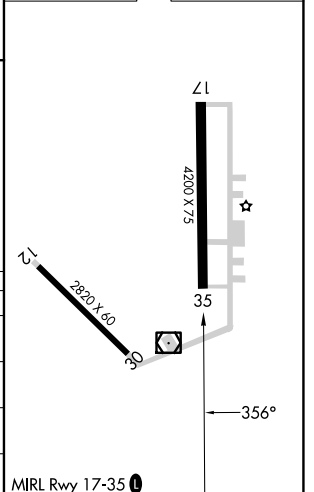
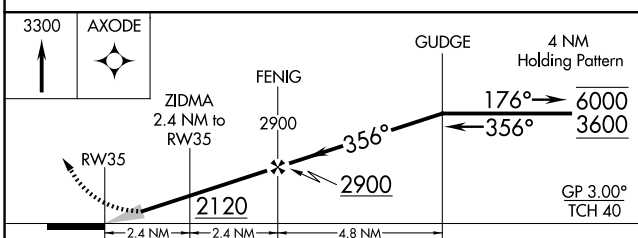
SCRIBNER STATE (SCB)

RNP APCH - GPS.	MISSED APPROACH: Climb to 3300 direct AXODE and hold.
<p>Baro-VNAV NA. Circling Rwy 17 NA at night. Use FET altimeter setting; when not received, use AHQ altimeter setting and increase LPV DA to 1629 feet; increase LNAV/VNAV DA to 1767 feet and all visibilities 1/8 SM. Increase all MDAs 40 feet.</p>	

FET AWOS-3 121.275	OMAHA APP CON 135.875 354.05	CTAF 122.9
------------------------------	--	----------------------



ELEV 1325	TDZE 1320
-----------	-----------



CATEGORY	A	B	C	D
LPV DA	1606-7/8	286 (300-7/8)		NA
LNAV/VNAV DA	1744-1 1/4	424 (500-1 1/4)		NA
LNAV MDA	1840-1	520 (600-1)		NA
CIRCLING	1900-1	575 (600-1)		NA

NC-2, 14 MAY 2026 to 11 JUN 2026

NC-2, 14 MAY 2026 to 11 JUN 2026