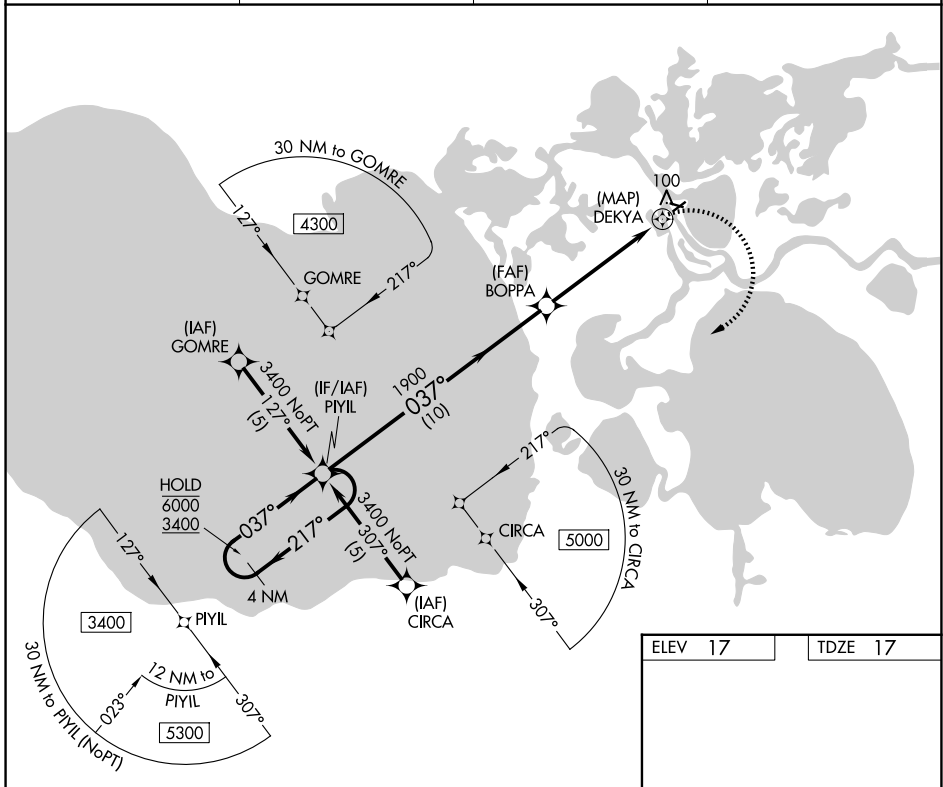


APP CRS	Rwy Ldg	3002
037°	TDZE	17
	Apt Elev	17

RNAV (GPS) RWY 4

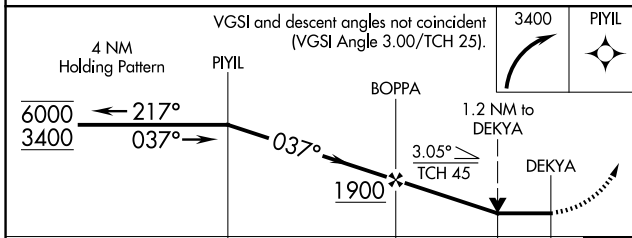
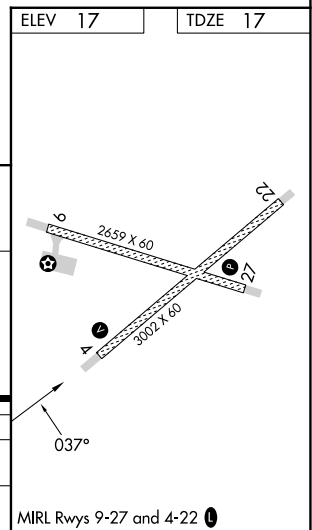
SELAWIK (WLK) (PASK)

RNP APCH.		MISSED APPROACH: Climbing right turn to 3400 direct PIYIL and hold.	
<p>▼ Circling Rwy 9, 27 NA at night. Rwy 4 helicopter visibility reduction below ¾ SM NA.</p>			
AWOS-3P	ANCHORAGE CENTER	KOTZEBUE RADIO	CTAF
135.65	119.2 263.0	122.5	122.7 0



AK, 14 MAY 2026 to 09 JUL 2026

AK, 14 MAY 2026 to 09 JUL 2026



	10 NM		4 NM	1.2 NM	0.5 NM
CATEGORY	A	B	C	D	
LNVA MDA	420-1	403 (500-1)	420-1¼	403 (500-1¼)	
CIRCLING	480-1 463 (500-1)	580-1 563 (600-1)	580-1½ 563 (600-1½)	580-2 563 (600-2)	