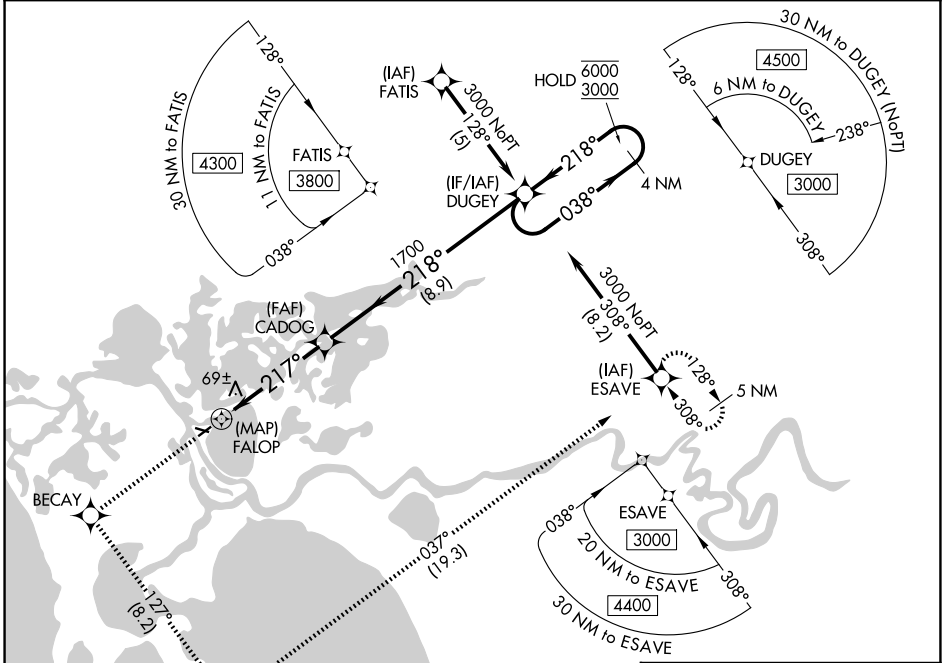


APP CRS	Rwy Ldg	3002
217°	TDZE	17
	Apt Elev	17

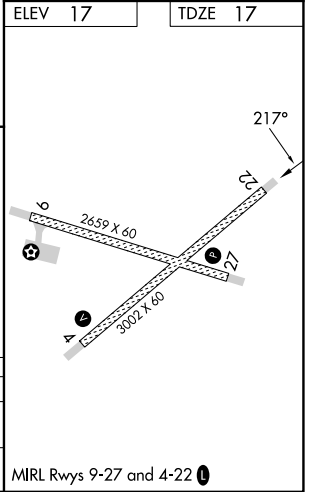
RNAV (GPS) Y RWY 22

SELAWIK (WLK) (PASK)

RNP APCH.		MISSED APPROACH: Climb to 3000 direct BECAY and left turn on track 127° to APACU and left turn on track 037° to ESAVE and hold.	
Circling Rwy 9, 27 NA at night.			
AWOS-3P	ANCHORAGE CENTER	KOTZEBUE RADIO	CTAF
135.65	119.2 263.0	122.5	122.7



ELEV	17	TDZE	17
3000	BECAY	APACU	ESAVE
	tr 127°	tr 037°	
CADOG FALOP $\leq 3.05^\circ$ TCH 45 217° 1700 218° 6000 / 3000 038° 4 NM Holding Pattern			
0.5 4.6 NM 8.9 NM			
CATEGORY	A	B	C
LNAV MDA	320-1 303 (400-1)		
CIRCLING	480-1 463 (500-1)	580-1 563 (600-1)	580-1½ 563 (600-1½)



MIRL Rwy 9-27 and 4-22

AK, 14 MAY 2026 to 09 JUL 2026

AK, 14 MAY 2026 to 09 JUL 2026