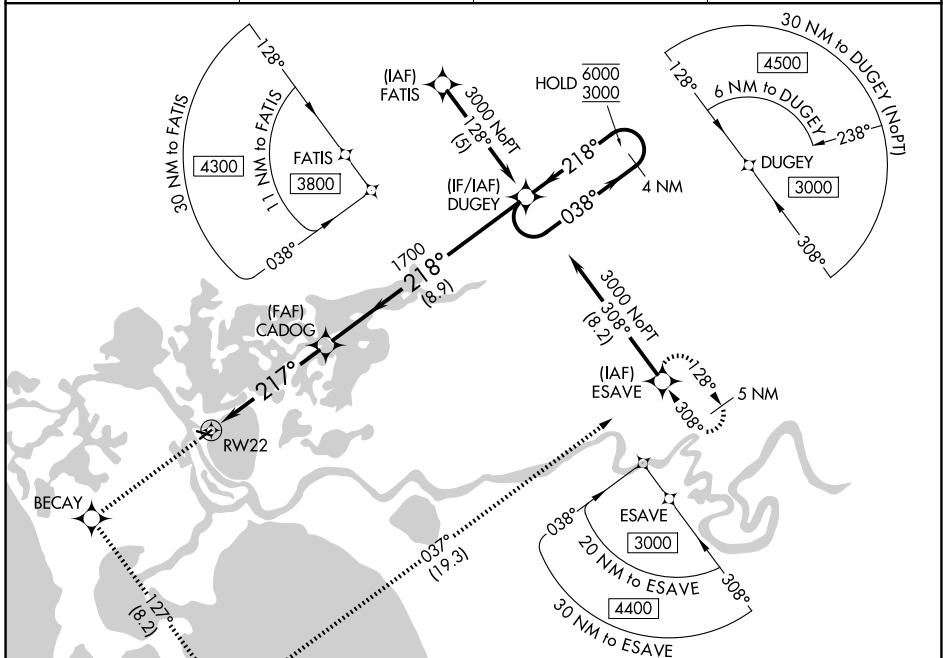


WAAS CH 40404 W22A	APP CRS 217°	Rwy Ldg 3002 TDZE 17 Apt Elev 17
--	------------------------	---

RNAV (GPS) Z RWY 22

SELAWIK (WLK) (PASK)

RNP APCH. ▼ For uncompensated Baro-VNAV systems, LNAV/VNAV NA below -25°C or above 49°C.		MISSED APPROACH: Climb to 3000 direct BECAY and left turn on track 127° to APACU and left turn on track 037° to ESAVE and hold.	
AWOS-3P 135.65	ANCHORAGE CENTER 119.2 263.0	KOTZEBUE RADIO 122.5	CTAF 122.7

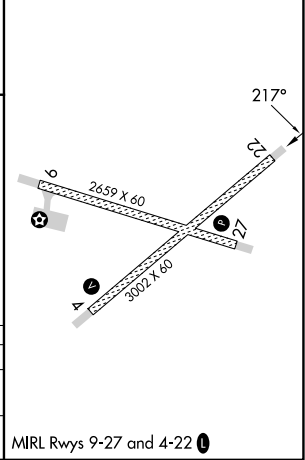


AK, 14 MAY 2026 to 09 JUL 2026

AK, 14 MAY 2026 to 09 JUL 2026

ELEV 17	TDZE 17
---------	---------

3000	BECAY	APACU	ESAVE	DUGEY
↑	✦	✦	✦	✦
	tr 127°	tr 037°		
CADOG		DUGEY		
1700		038° → 6000		4 NM
217°		← 218° 3000		Holding Pattern
RWY 22		GP 3.00°		
5.1 NM		8.9 NM		TCH 45
CATEGORY	A	B	C	D
LPV DA		267-1	250 (300-1)	
LNAV/VNAV DA		364-1¼	347 (400-1¼)	



MIRL Rwy 9-27 and 4-22