

VOR/DME WLK 114.2 Chan 89	APP CRS 223°	Rwy Ldg 3002 TDZE 17 Apt Elev 17
---	------------------------	---

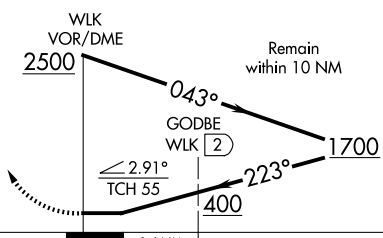
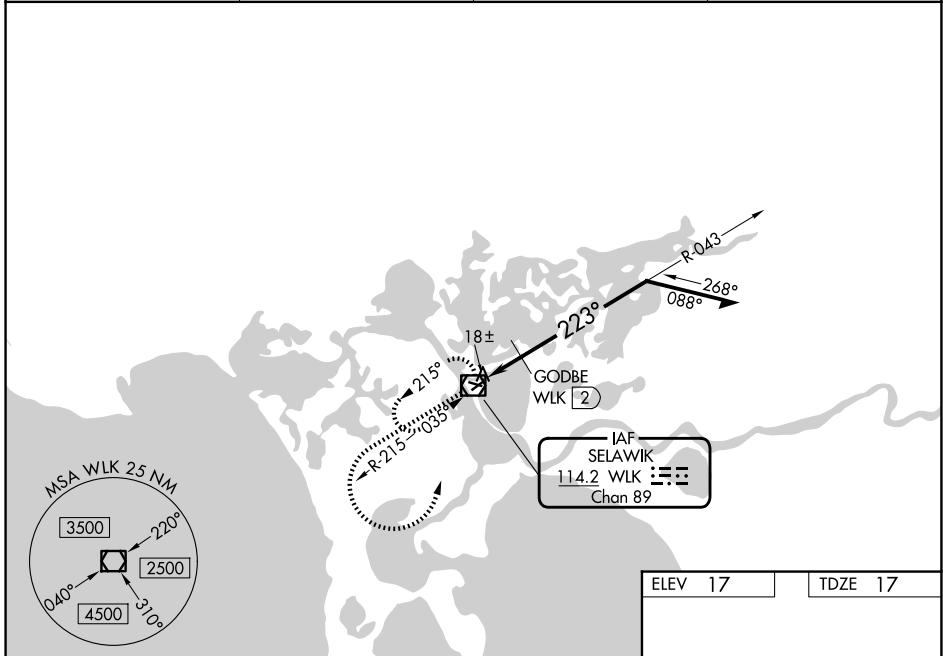
VOR RWY 22

SELAWIK (WLK) (PASK)

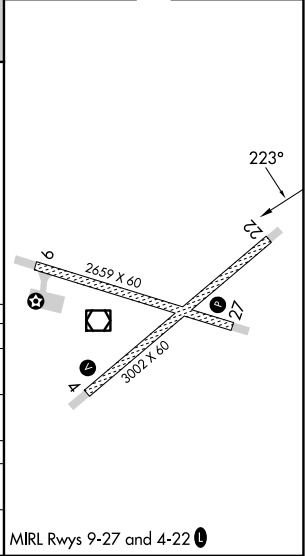
⚠ Circling Rwy 4, 9, 27 NA at night. When local altimeter setting not received, use OTZ/PAOT altimeter setting and increase all MDAs 160 feet and S-22 visibility Cat C/D ½ SM. And GODBE fix minimums visibility Cat C/D ½ SM, and Circling visibility Cat C/D ½ SM.

MISSED APPROACH: Climb to 1000 then climbing left turn to 2500 direct WLK VOR/DME and hold, continue climb-in-hold to 2500.

AWOS-3P 135.65	ANCHORAGE CENTER 119.2 263.0	KOTZEBUE RADIO 122.5	CTAF 122.7 0
--------------------------	--	--------------------------------	-------------------------------



ELEV 17	TDZE 17
---------	---------



CATEGORY	A	B	C	D
S-22	400-1	383 (400-1)	400-1½	383 (400-1½)
CIRCLING	480-1 463 (500-1)	580-1 563 (600-1)	580-1½ 563 (600-1½)	580-2 563 (600-2)
GODBE FIX MINIMUMS				
S-22	380-1 363 (400-1)			
CIRCLING	480-1 463 (500-1)	580-1 563 (600-1)	580-1½ 563 (600-1½)	580-2 563 (600-2)

MRL Rwys 9-27 and 4-22 **0**

AK, 14 MAY 2026 to 09 JUL 2026

AK, 14 MAY 2026 to 09 JUL 2026