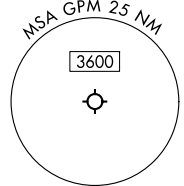


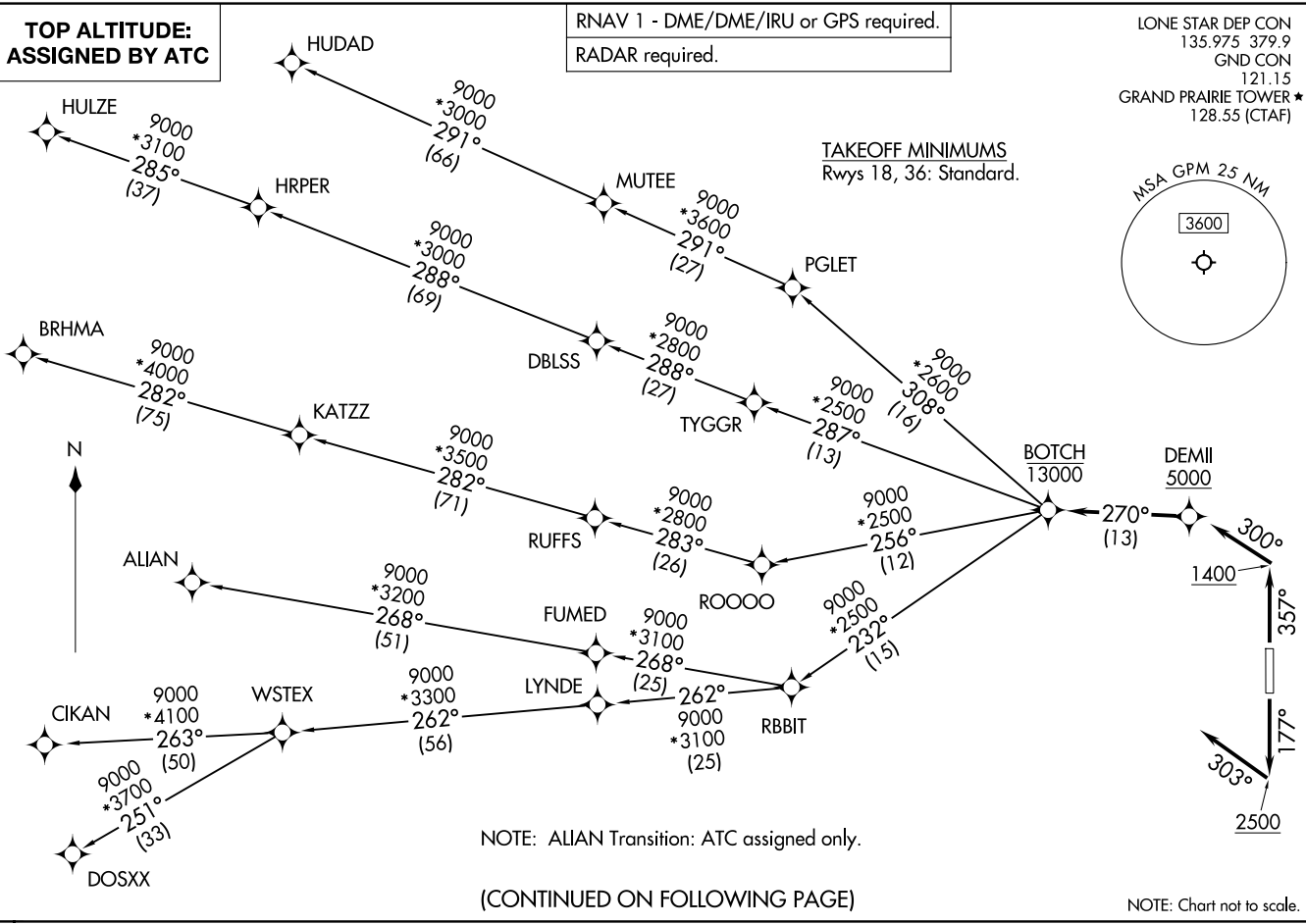
RNAV 1 - DME/DME/IRU or GPS required.  
RADAR required.

LONE STAR DEP CON  
135.975 379.9  
GND CON  
121.15  
GRAND PRAIRIE TOWER ★  
128.55 (CTAF)



TAKEOFF MINIMUMS  
Rwys 18, 36: Standard.

TOP ALTITUDE:  
ASSIGNED BY ATC



NOTE: ALIAN Transition: ATC assigned only.

(CONTINUED ON FOLLOWING PAGE)

NOTE: Chart not to scale.

BOTCH TWO DEPARTURE (RNAV)  
(BOTCH2.BOTCH) 14MAY26

GRAND PRAIRIE, TEXAS  
GRAND PRAIRIE MUNI (GPM)

(BOTCH2.BOTCH) 26134  
BOTCH TWO DEPARTURE (RNAV)

AL-9209 (FAA)  
GRAND PRAIRIE MUNI (GPM)  
GRAND PRAIRIE, TEXAS

# BOTCH TWO DEPARTURE (RNAV)



## DEPARTURE ROUTE DESCRIPTION

TAKEOFF RUNWAY 18: Climb on heading 177° to 2500, then on heading 303° or as assigned by ATC, for vectors to cross DEMIL at or above 5000, thence. . .

TAKEOFF RUNWAY 36: Climb on heading 357° to 1400, then on heading 300° or as assigned by ATC, for vectors to cross DEMIL at or above 5000, thence. . .

. . . on track 270° to cross BOTCH at or below 13000, then on (transition). Maintain ATC assigned altitude, expect filed altitude 10 minutes after departure.

ALIAN TRANSITION (BOTCH2.ALIAN)

BRHMA TRANSITION (BOTCH2.BRHMA)

CIKAN TRANSITION (BOTCH2.CIKAN)

DOSXX TRANSITION (BOTCH2.DOSXX)

HUDAD TRANSITION (BOTCH2.HUDAD)

HULZE TRANSITION (BOTCH2.HULZE)

WSTEX TRANSITION (BOTCH2.WSTEX)

SC-2, 14 MAY 2026 to 11 JUN 2026

SC-2, 14 MAY 2026 to 11 JUN 2026