

DALLAS FOUR DEPARTURE (DALL4 TTT) 27NOV25 GRAND PRAIRIE MUNI (GPM) GRAND PRAIRIE, TEXAS

LONE STAR DEP CON 135.975 379.9
GND CON 121.15
GRAND PRAIRIE TOWER ★ 128.55 (CTAF)

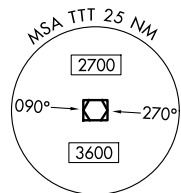
RADAR and DME required.

TAKEOFF MINIMUMS
Rwy 18: Standard.

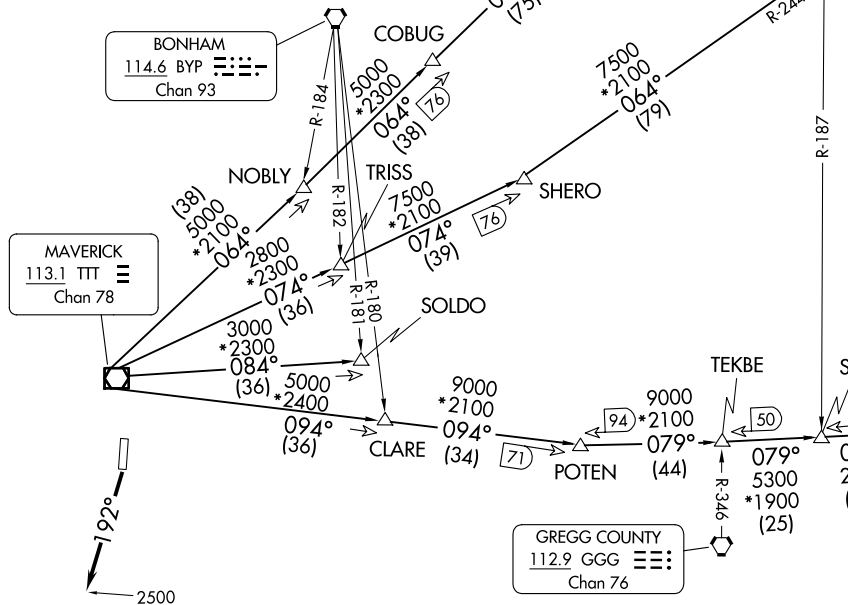
TOP ALTITUDE:
ASSIGNED BY ATC

LITTLE ROCK
115.1 LIT
Chan 98

TEXARKANA
116.3 TXK
Chan 110



NOTE: BELCHER Transition: For aircraft inbound to the JAN, MLU, and SHV terminal areas only.
NOTE: SOLDO Transition: ATC assigned.



(DALL4 TTT) 25331 GRAND PRAIRIE MUNI (GPM) GRAND PRAIRIE, TEXAS AL-9209 (FAA)

(CONTINUED ON FOLLOWING PAGE)

NOTE: Chart not to scale.

DALLAS FOUR DEPARTURE



DEPARTURE ROUTE DESCRIPTION

TAKEOFF RUNWAY 18: Climb on heading 192° to 2500 before proceeding on course.

Fly assigned heading for RADAR vectors to appropriate route. Maintain ATC assigned altitude.

BELCHER TRANSITION (DALL4.EIC): From over TTT VOR/DME on TTT R-094 to POTEN, then on EIC R-259 to EIC VORTAC.

LITTLE ROCK TRANSITION (DALL4.LIT): From over TTT VOR/DME on TTT R-064 to ORTRO, then on LIT R-237 to LIT VORTAC.

SOLDO TRANSITION (DALL4.SOLDO): From over TTT VOR/DME on TTT R-084 to SOLDO.

TEXARKANA TRANSITION (DALL4.TXK): From over TTT VOR/DME on TTT R-074 to SHERO, then on TXK R-244 to TXK VORTAC.

SC-2, 14 MAY 2026 to 11 JUN 2026

SC-2, 14 MAY 2026 to 11 JUN 2026