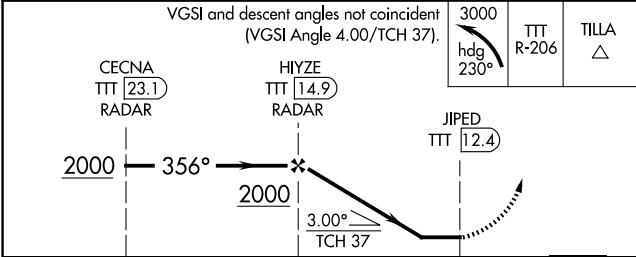
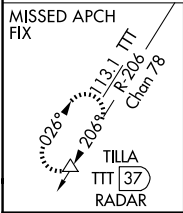
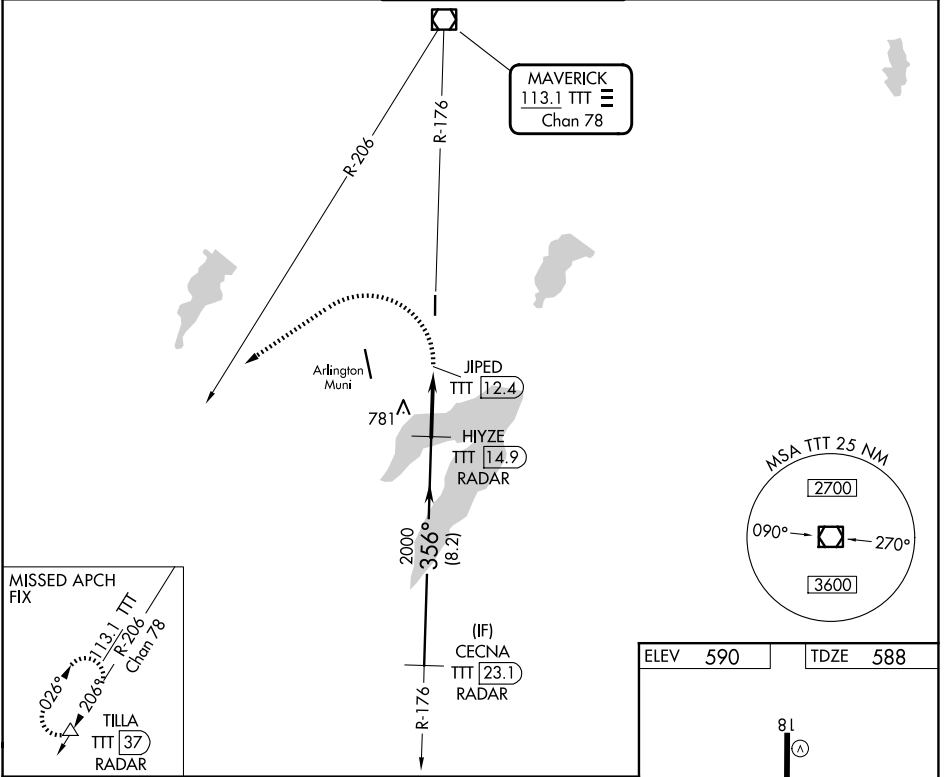


VOR/DME TTT 113.1 Chan 78	APP CRS 356°	Rwy Ldg TDZE 588 Apt Elev 590	4001
---	------------------------	---	-------------

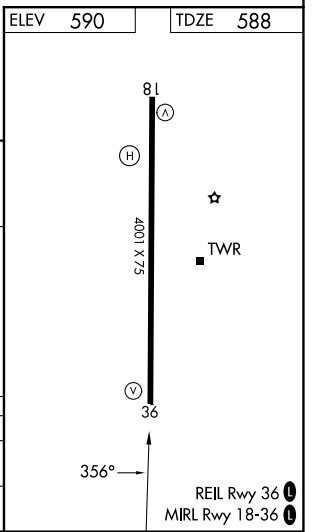
VOR RWY 36

GRAND PRAIRIE MUNI (GPM)

RADAR and DME required.		MISSED APPROACH: Climbing left turn to 3000 on heading 230° and TTT VOR/DME R-206 to TILLA/37 DME/RADAR and hold.	
Circling Rwy 18 NA at night.		GRAND PRAIRIE TOWER ★ 128.55 (CTAF)	GND CON 121.15
AWOS-3P 118.475	LONE STAR APP CON 135.975 379.9	UNICOM 123.075	



CATEGORY	A	B	C	D
S-36	1040-2½	452 (500-2½)		NA
CIRCLING	1100-2½ 510 (600-2½)	1280-2½ 690 (700-2½)		NA



SC-2, 14 MAY 2026 to 11 JUN 2026

SC-2, 14 MAY 2026 to 11 JUN 2026