


WAAS CH 86217 W01A	APP CRS 010°	Rwy Ldg TDZE Apt Elev	6500 1101 1109
---------------------------------	------------------------	-----------------------------	---

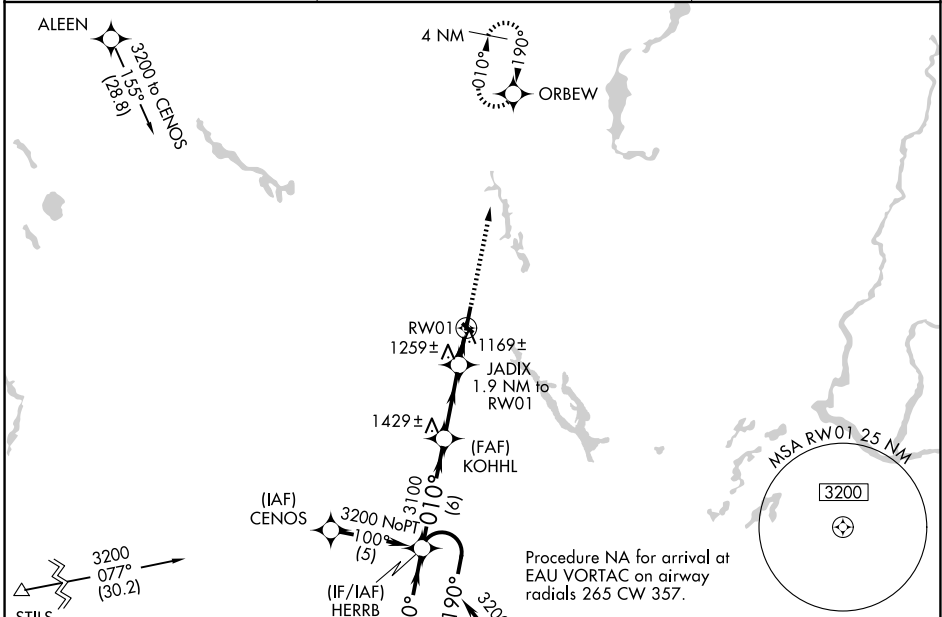
RNAV (GPS) RWY 1

RICE LAKE RGNL/CARL'S FLD (RPD)

⚠ If local altimeter setting not received, use Chippewa Valley Rgnl altimeter setting and increase all DAs/MDAs 120 feet. DME/DME RNP-0.3 NA. Baro-VNAV NA below -17°C (3°F). Baro VNAV and VDP NA when using Chippewa Valley Rgnl altimeter setting. For inop MALSR, increase LPV visibility to 1, and LNAV Cat D visibility to 1½. Circling Rwy 13, 31 NA at night.

MALSR  **MISSED APPROACH:** Climb to 3200 direct ORBEW and hold.

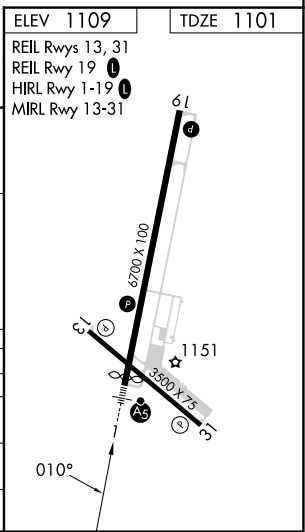
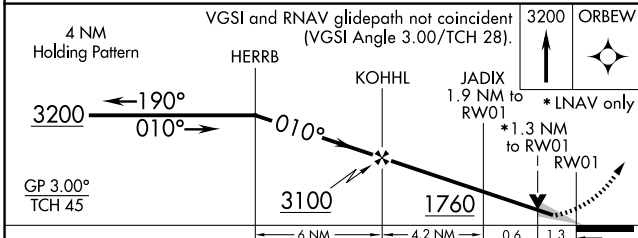
AWOS-3 120.525	MINNEAPOLIS CENTER 125.3 335.6	UNICOM 122.7(CTAF) 0
--------------------------	--	--------------------------------



EC-3, 14 MAY 2026 to 11 JUN 2026

EC-3, 14 MAY 2026 to 11 JUN 2026

ELEV 1109	TDZE 1101
REIL Rwy 13, 31	REIL Rwy 19
HIRL Rwy 1-19	MIRL Rwy 13-31



CATEGORY	A	B	C	D
LPV DA		1390-½	289 (300-½)	
LNAV/ VNAV		1440-¾	339 (400-¾)	
LNAV MDA	1520-½	419 (500-½)	1520-¾ 419 (500-¾)	1520-1 419 (500-1)
CIRCLING	1600-1¼ 493 (500-1¼)	1740-1¼ 631 (700-1¼)	1740-1¾ 631 (700-1¾)	1940-2¾ 831 (900-2¾)