

WAAS CH <b>93542</b> <b>W19A</b>	APP CRS <b>190°</b>	Rwy Ldg TDZE Apt Elev	<b>6700</b> <b>1109</b> <b>1109</b>
--	------------------------	-----------------------------	---

# RNAV (GPS) RWY 19

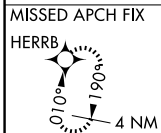
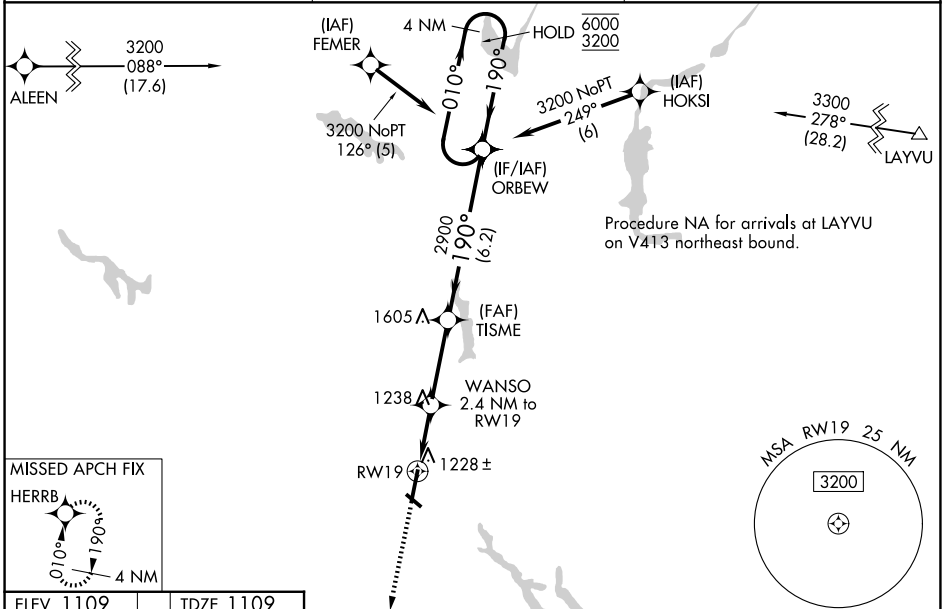
RICE LAKE RGNL/CARL'S FLD (R/PD)

RNP APCH.

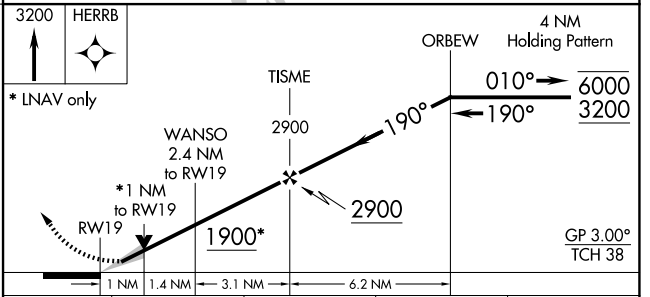
**⚠** Circling Rwy 13, 31 NA at night. For uncompensated Baro-VNAV systems, procedure NA below -17°C or above 54°C.

MISSED APPROACH:  
Climb to 3200 direct HERRB and hold.

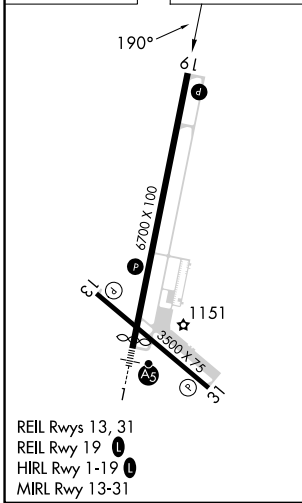
AWOS-3 <b>120.525</b>	MINNEAPOLIS CENTER <b>125.3 335.6</b>	UNICOM <b>122.7 (CTAF) 0</b>
--------------------------	--	---------------------------------



ELEV 1109	TDZE 1109
-----------	-----------



CATEGORY	A	B	C	D
LPV DA		1309- <sup>3</sup> / <sub>4</sub>	200 (200- <sup>3</sup> / <sub>4</sub> )	
LNAV/VNAV DA		1389- <sup>7</sup> / <sub>8</sub>	280 (300- <sup>7</sup> / <sub>8</sub> )	
LNAV MDA		1480-1	371 (400-1)	
CIRCLING	1580-1	1740-1	1740- <sup>1</sup> / <sub>4</sub>	1940- <sup>2</sup> / <sub>4</sub>
	471 (500-1)	631 (700-1)	631 (700- <sup>1</sup> / <sub>4</sub> )	831 (900- <sup>2</sup> / <sub>4</sub> )



EC-3, 14 MAY 2026 to 11 JUN 2026

EC-3, 14 MAY 2026 to 11 JUN 2026