

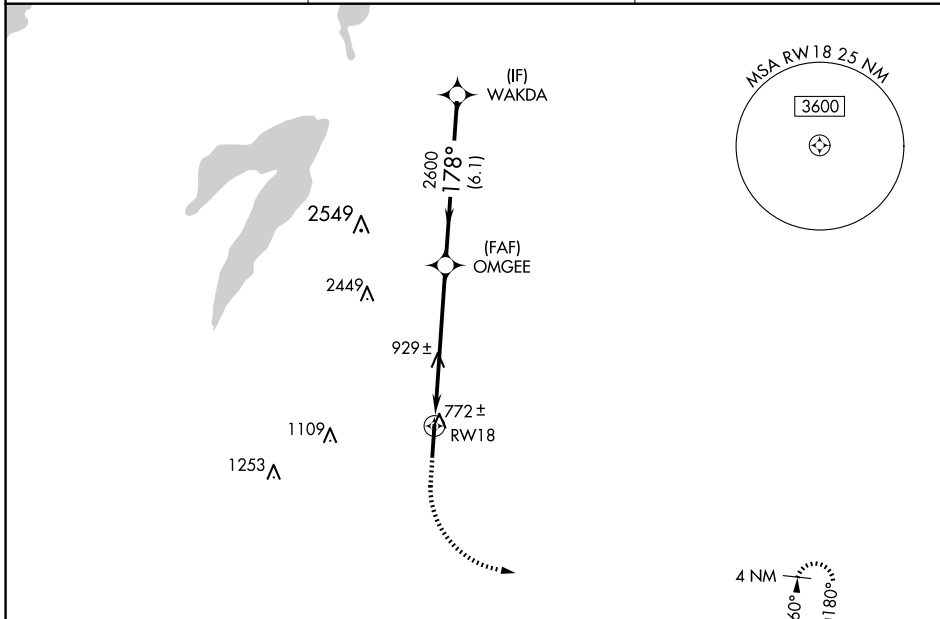
WAAS CH <b>62920</b> <b>W18A</b>	APP CRS <b>178°</b>	Rwy Idg <b>6500</b> TDZE <b>727</b> Apt Elev <b>727</b>
--	------------------------	---

# RNAV (GPS) RWY 18

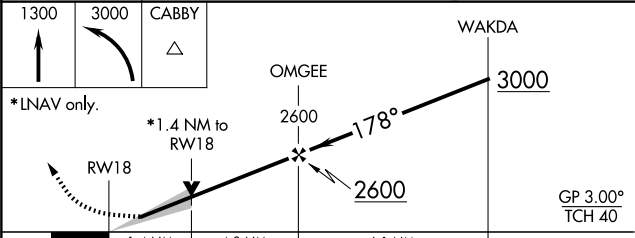
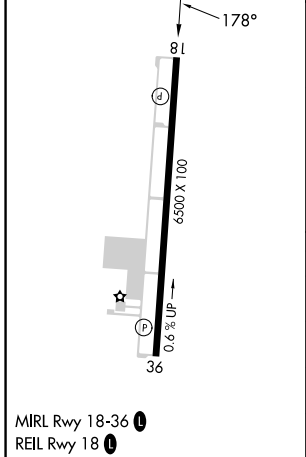
MID-WAY RGNL (JWY)

RNP APCH. <b>▽</b> <b>▲</b> For uncompensated Baro-VNAV systems, LNAV/VNAV NA below -16°C or above 54°C.	MISSED APPROACH: Climb to 1300 then climbing left turn to 3000 direct CABBY and hold.
--	---

AWOS-3P <b>119.575</b>	LONE STAR APP CON <b>125.2 343.65</b>	UNICOM <b>122.975 (CTAF)</b> <b>①</b>
---------------------------	--	--



ELEV 727	TDZE 727
----------	----------



CATEGORY	A	B	C	D
LPV DA		927-3/4	200 (200-3/4)	
LNAV/VNAV DA		998-7/8	271 (300-7/8)	
LNAV MDA	1220-1	493 (500-1)	1220-1 3/8	493 (500-1 3/8)
CIRCLING	1220-1	493 (500-1)	1300-1 1/2 573 (600-1 1/2)	1420-2 1/4 693 (700-2 1/4)

SC-2, 14 MAY 2026 to 11 JUN 2026

SC-2, 14 MAY 2026 to 11 JUN 2026