

| | | |
|--|------------------------|---|
| VORTAC TFD 114.8 Chan 95 | APP CRS 071° | Rwy Ldg TDZE 1564 Apt Elev 1576 |
|--|------------------------|---|

VOR RWY 5

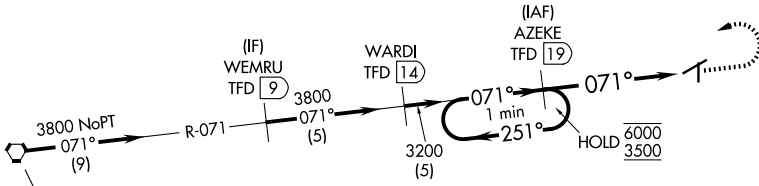
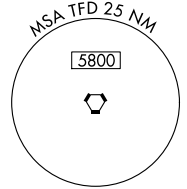
COOLIDGE MUNI (P08)

DME required.

⚠ Circling Rwy 17-35 NA at night.

MISSED APPROACH: Climb to 2300 then climbing left turn to 3500 on TFD VORTAC R-071 to AZEKE/19 DME and hold.

| | | |
|----------------------------|--|--|
| AWOS-3PT 119,350 | ALBUQUERQUE CENTER 125.4 269.3 | UNICOM 123.075 (CTAF) 0 |
|----------------------------|--|--|



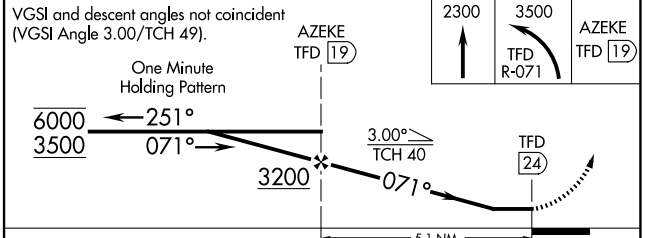
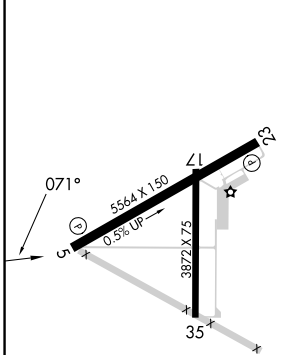
IAF STANFIELD
114.8 TFD 95
Chan 95

Procedure NA for arrivals at TFD VORTAC on V94 westbound.

SW-4, 14 MAY 2026 to 11 JUN 2026

SW-4, 14 MAY 2026 to 11 JUN 2026

| | |
|-----------|-----------|
| ELEV 1576 | TDZE 1564 |
|-----------|-----------|



| CATEGORY | A | B | C | D |
|----------|--------|-------------|----|---|
| S-5 | 2200-1 | 636 (700-1) | NA | |
| CIRCLING | 2200-1 | 624 (700-1) | NA | |