

WAAS CH 90321 W29A	APP CRS 292°	Rwy Idg TDZE Apt Elev	5100 3231 3255
--	------------------------	-----------------------------	---

RNAV (GPS) RWY 29

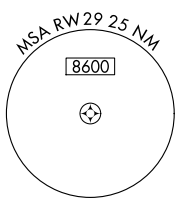
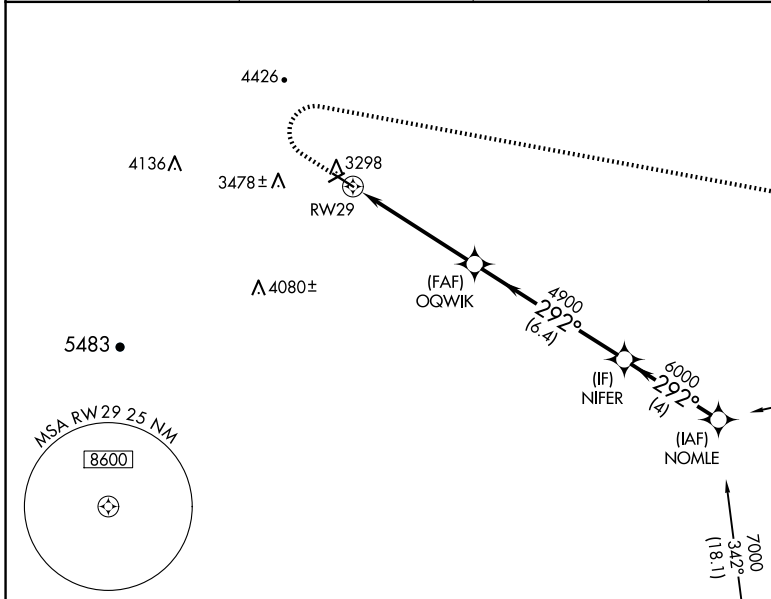
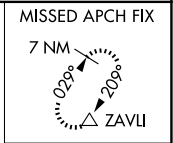
STURGIS MUNI (49B)

RNP APCH - GPS.

For uncompensated Baro-VNAV systems, LNAV/VNAV NA below -21°C or above 54°C
 *Missed approach requires minimum climb of 364 feet per NM to 4900.

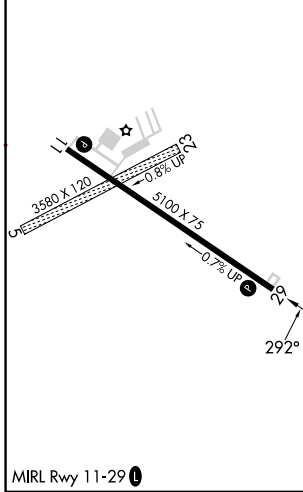
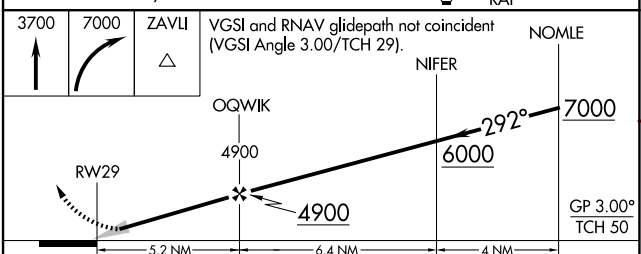
MISSED APPROACH: Climb to 3700 then climbing right turn to 7000 direct ZAVLI and hold.

AWOS-3P 119.275	ELLSWORTH APP CON * 119.5 259.1	GCO 121.725	UNICOM 122.8 (CTAF)
---------------------------	---	-----------------------	-------------------------------



ELEV 3255	TDZE 3231
------------------	------------------

Procedure NA for arrivals at RAP VORTAC on airway radials 252 CW 072.



CATEGORY	A	B	C	D
LPV DA*	3532-1 301 (300-1)			NA
LPV DA	3532-1 301 (300-1)		4073-3 842 (900-3)	NA
LNAV/VNAV DA	3532-1 301 (300-1)		3986-3 755 (800-3)	NA
LNAV MDA	3640-1 409 (400-1)		4280-3 1049 (1100-3)	NA

NC-1, 14 MAY 2026 to 11 JUN 2026

NC-1, 14 MAY 2026 to 11 JUN 2026