

| | | |
|---|------------------------|---|
| LOC/DME I-JFZ 109.75 Chan 34 (Y) | APP CRS 252° | Rwy Ldg TDZE 4299 2653 Apt Elev 2653 |
|---|------------------------|---|

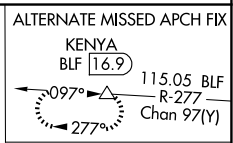
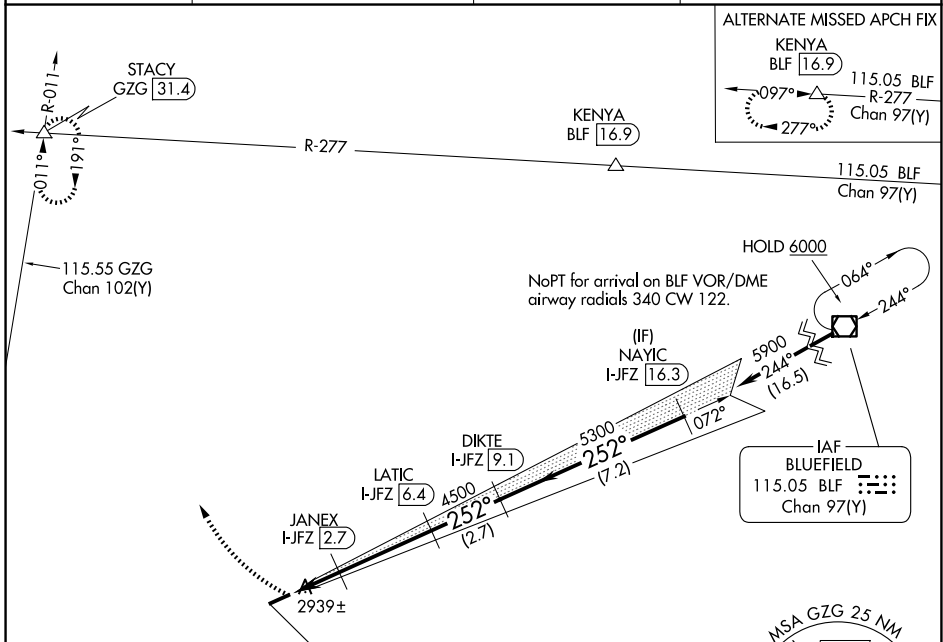
LOC/DME RWY 25

TAZEWELL COUNTY (JF'Z)

⚠ Visibility reduction by helicopters NA. When local altimeter setting not received use Wise altimeter setting and increase all MDA 100 feet, increase S-25 Cat C visibility 1/4 mile and Circling Cat C visibility 3/8 mile. When VGSI inop, Straight-in/Circling Rwy 25 NA at night. When VGSI inop, Circling Rwy 7 NA at night. Circling NA for Cat C south of Rwy 7-25.

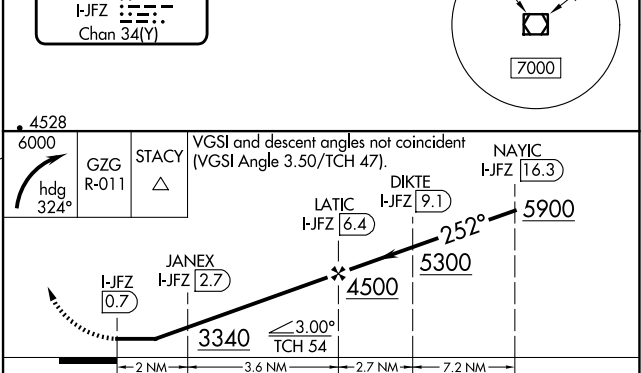
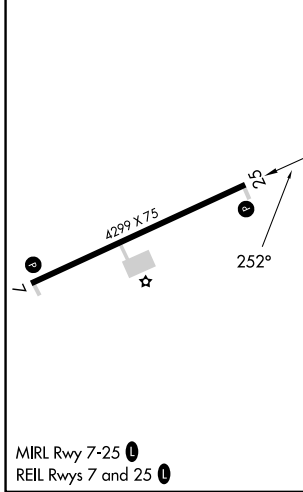
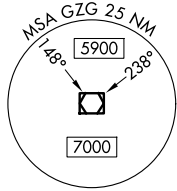
MISSED APPROACH: Climbing right turn to 6000 on heading 324° and GZG R-011 to STACY INT/GZG 31.4 DME and hold.

| | | | |
|--------------------------|---------------------------------------|-----------------------|----------------------------------|
| AWOS-3 118.075 | ATLANTA CENTER 127.85 269.3 | GCO 135.075 | UNICOM 123.05 (CTAF) 0 |
|--------------------------|---------------------------------------|-----------------------|----------------------------------|



| | |
|-----------|-----------|
| ELEV 2653 | TDZE 2653 |
|-----------|-----------|

LOCALIZER 109.75
I-JFZ [109.75]
Chan 34(Y)



| | | | | |
|----------|--------|-------------|-------------------------------|----|
| CATEGORY | A | B | C | D |
| S-25 | 3200-1 | 547 (600-1) | 3200-1 1/2 547 (600-1 1/2) | NA |
| CIRCLING | 3240-1 | 587 (600-1) | 3240-1 1/2 587 (600-1 1/2) | NA |

NE-3, 14 MAY 2026 to 11 JUN 2026

NE-3, 14 MAY 2026 to 11 JUN 2026