

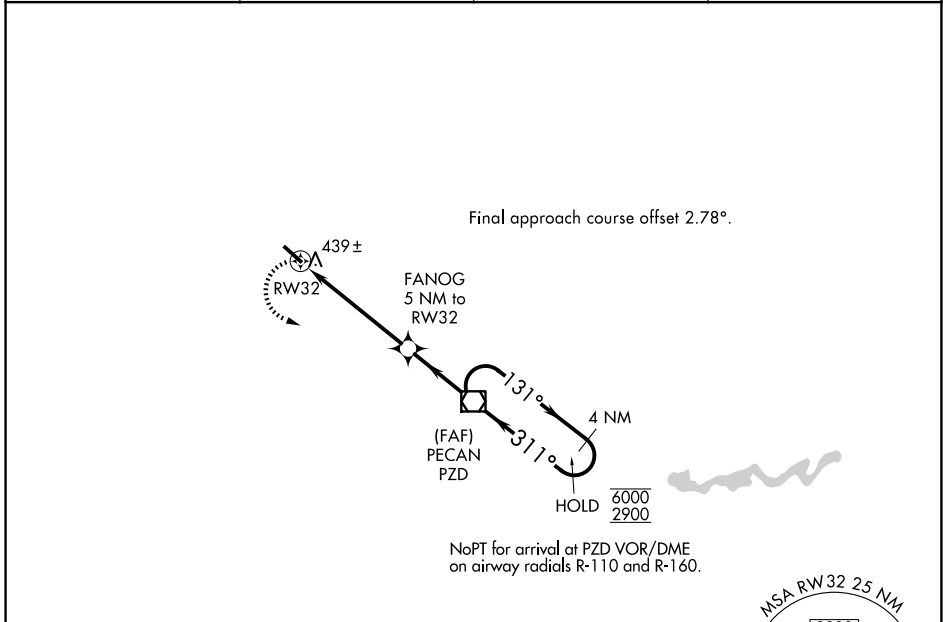
APP CRS	Rwy Ldg	<b>4507</b>
<b>311°</b>	TDZE	<b>322</b>
	Apt Elev	<b>332</b>

# RNAV (GPS) RWY 32

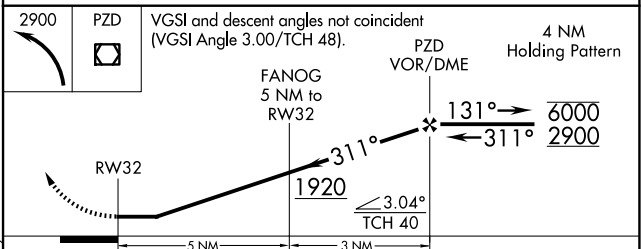
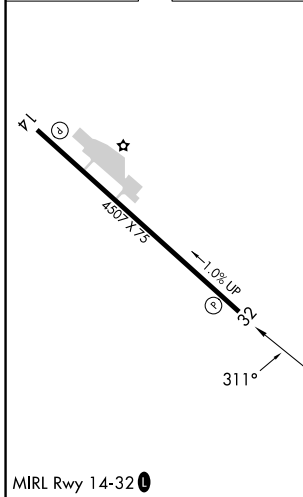
DAWSON MUNI (16J)

RNP APCH	<p><b>▼</b> Rwy 32 helicopter visibility reduction below <math>\frac{3}{4}</math> SM NA.</p> <p><b>▲ NA</b> Use Albany altimeter setting. When Albany altimeter settings not received, use Americus altimeter setting and increase all MDAs 20 feet.</p>	MISSED APPROACH: Climbing left turn to 2900 direct PZD VOR/DME and hold, continue climb-in-hold to 2900.
----------	--	--

AWOS-3PT <b>118.8</b>	ABY ASOS <b>133.05</b>	JACKSONVILLE CENTER <b>125.75 363.075</b>	UNICOM <b>123.05 (CTAF) 0</b>
--------------------------	---------------------------	--	----------------------------------



ELEV 332	TDZE 322
----------	----------



CATEGORY	A	B	C	D
LNAV MDA	760-1	438 (500-1)		NA
CIRCLING	960-1	628 (700-1)		NA

SE-4, 14 MAY 2026 to 11 JUN 2026

SE-4, 14 MAY 2026 to 11 JUN 2026