

(RACER8.MCI) 24137

# RACER EIGHT DEPARTURE

MIDWEST NTL AIR CENTER (GPH)  
MOSBY, MISSOURI

AL-9229 (FAA)

KANSAS CITY DEP CON  
118.4 307.35  
CLNC DEL  
118.2

RADAR required.

**TOP ALTITUDE:  
10000**

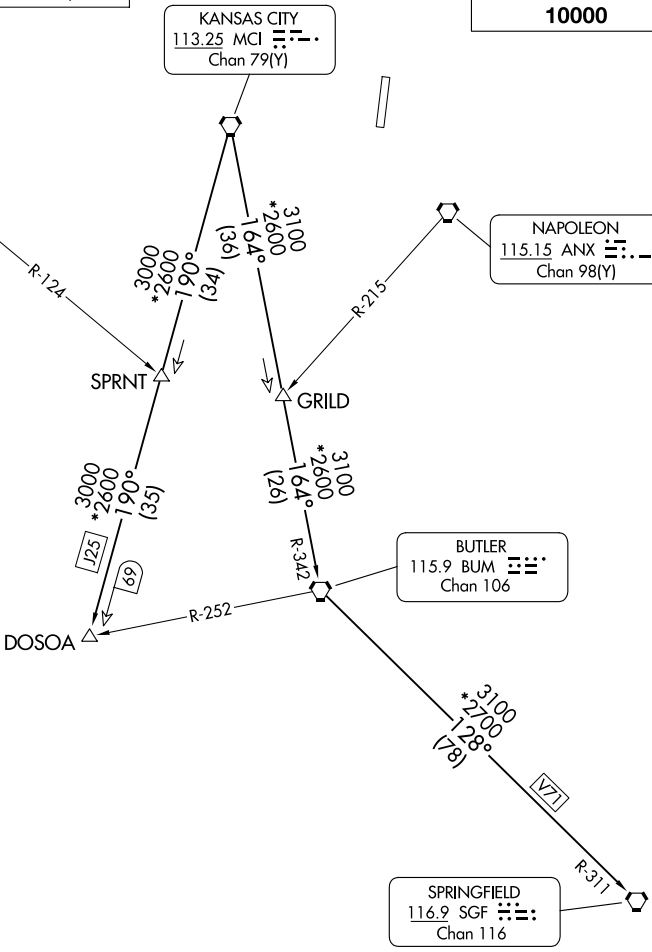
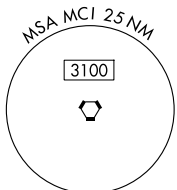
KANSAS CITY  
113.25 MCI  
Chan 79(Y)

TOPEKA  
117.8 TOP  
Chan 125

NAPOLEON  
115.15 ANX  
Chan 98(Y)

BUTLER  
115.9 BUM  
Chan 106

SPRINGFIELD  
116.9 SGF  
Chan 116



TAKEOFF MINIMUMS  
Rwys 18, 36: Standard.

NOTE: Chart not to scale.

**DEPARTURE ROUTE DESCRIPTION**

**TAKEOFF ALL RUNWAYS:** Climb on assigned heading for RADAR vectors to appropriate route. Maintain 10000 or as assigned by ATC, expect filed altitude 10 minutes after departure.

**BUTLER TRANSITION (RACER8.BUM):** From over MCI VORTAC on MCI R-164 and BUM R-342 to BUM VORTAC.

**DOSOA TRANSITION (RACER8.DOSOA):** From over MCI VORTAC on MCI R-190 to DOSOA.

**SPRINGFIELD TRANSITION (RACER8.SGF):** From over MCI VORTAC on MCI R-164 and BUM R-342 to BUM VORTAC, then on BUM R-128 and SGF R-311 to SGF VORTAC.

**RACER EIGHT DEPARTURE**  
(RACER8.MCI) 05OCT23

MOSBY, MISSOURI  
MIDWEST NTL AIR CENTER (GPH)

NC-3, 14 MAY 2026 to 11 JUN 2026

NC-3, 14 MAY 2026 to 11 JUN 2026