

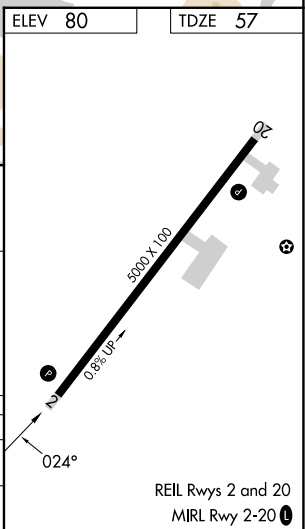
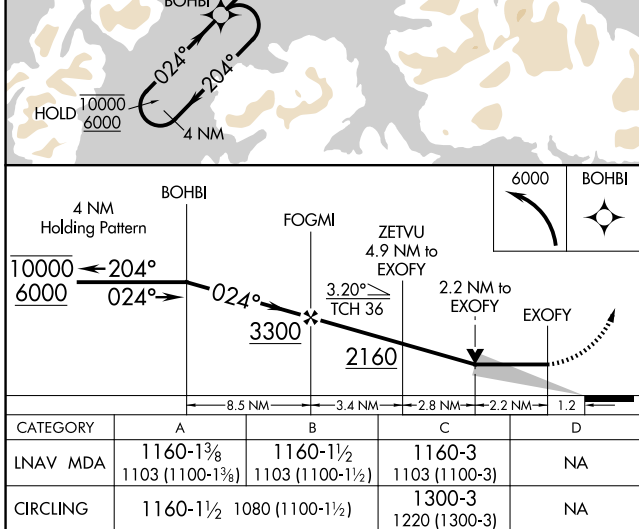
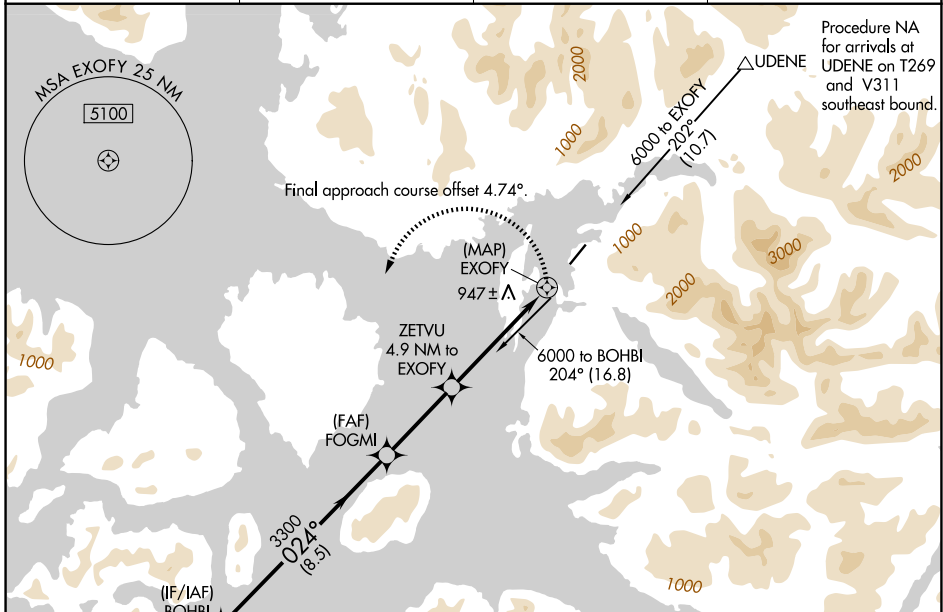
APP CRS	Rwy Ldg	5000
024°	TDZE	57
	Apt Elev	80

RNAV (GPS) Y RWY 2

KLAWOCK (AKW) (PAKW)

RNP APCH-GPS.	MISSED APPROACH: (Do not exceed 165K until BOHBI) Climbing left turn to 6000 direct BOHBI and hold, continue climb-in-hold to 6000.
Circling NA east of Rwy 2-20. Circling Rwy 20 NA at night. -10°C	

ASOS 135.45	ANCHORAGE CENTER 118.5 284.6	KETCHIKAN RADIO 122.25	CTAF 120.9
-----------------------	--	----------------------------------	----------------------



AK, 14 MAY 2026 to 09 JUL 2026

AK, 14 MAY 2026 to 09 JUL 2026