

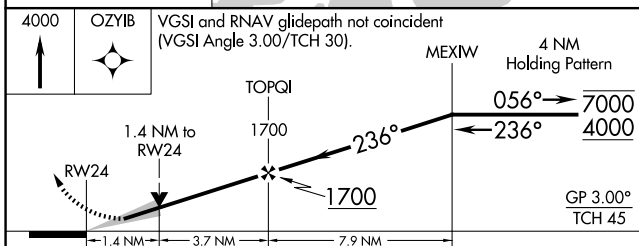
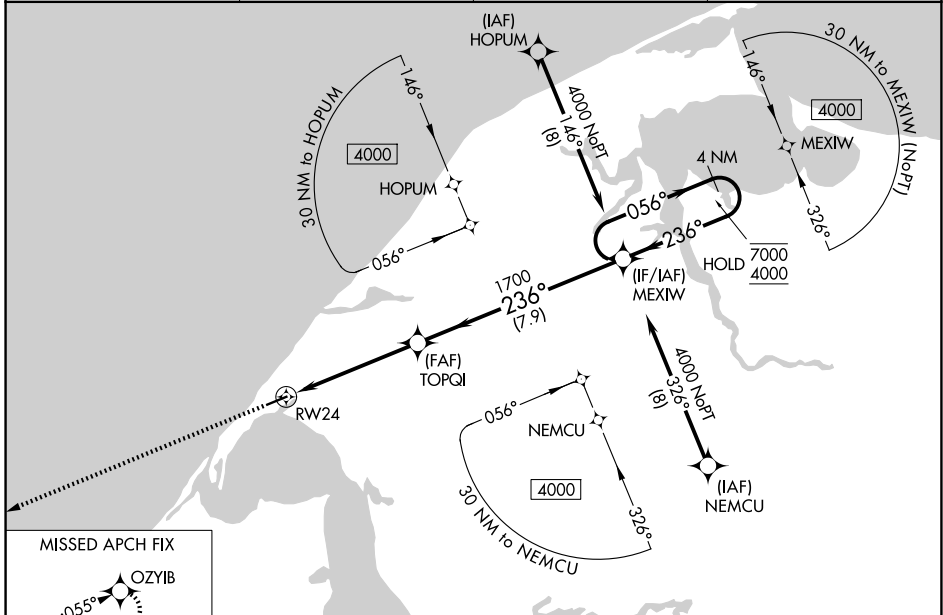
WAAS CH <b>56642</b> <b>W24A</b>	APP CRS <b>236°</b>	Rwy Ldg <b>4494</b> TDZE <b>45</b> Apt Elev <b>45</b>
--	------------------------	---

# RNAV (GPS) RWY 24

WAINWRIGHT (AWI) (PAWI)

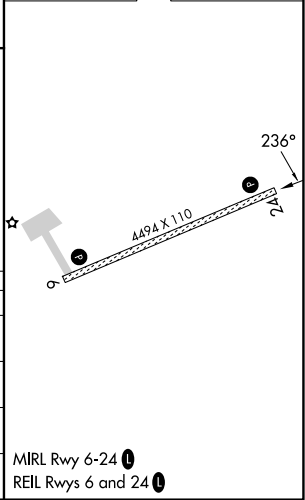
RNP APCH - GPS.		MISSED APPROACH: Climb to 4000 direct OZYIB and hold, continue climb-in-hold to 4000	
<p>For uncompensated Baro-VNAV systems, LNAV/VNAV NA below -20°C or above 54°C.</p>			

ASOS-3 <b>132.25</b>	ANCHORAGE CENTER <b>135.3 239.25</b>	BARROW RADIO <b>122.5</b>	CTAF <b>122.8</b>
-------------------------	---	------------------------------	----------------------



ELEV 45	TDZE 45
---------	---------

CATEGORY	A	B	C	D
LPV DA		295-1	250 (300-1)	
LNAV/VNAV DA		295-1	250 (300-1)	
LNAV MDA	520-1	475 (500-1)	520-1 $\frac{3}{8}$	475 (500-1 $\frac{3}{8}$ )
CIRCLING	520-1	475 (500-1)	520-1 $\frac{1}{2}$ 475 (500-1 $\frac{1}{2}$ )	600-2 555 (600-2)



AK, 14 MAY 2026 to 09 JUL 2026

AK, 14 MAY 2026 to 09 JUL 2026